

Ken McKenzie
Executive Vice President
Site C Clean Energy Project
P.O. Box 49260
Vancouver, B.C. V7X 1V5

September 8, 2020

Re: Notice of Site C Construction Activities: October - December 2020

As part of our engagement, we provide regular updates and information on construction activities. This letter describes the work planned from October 1 to December 31, 2020.

COVID-19 update

We continue to work closely with health officials, local communities, contractors and unions to monitor and respond to the COVID-19 pandemic.

Through the summer, we've been following health authority guidance to increase construction activities in a gradual phased approach at the dam site. We're adhering to strict health and safety protocols as we work towards critical milestones, such as river diversion this fall, which remains on schedule.

On July 17, we were advised of one positive COVID-19 case at camp. The individual was immediately quarantined, Northern Health conducted contact tracing, and any other potential contacts were isolated. The individual who had tested positive has since recovered, and no further infections have taken place at Site C.

Safety continues to be our top priority. We are committed to safely and responsibly advancing the Site C project, while protecting the workforce and the local community. You can keep up-to-date with our COVID-19 measures [here](#).

For the upcoming period, construction at Site C will focus on:

- Diversion of the Peace River in fall 2020
- Progression of earthworks at the dam site and commissioning of the two diversion tunnels
- Construction and energization of the Site C substation
- Construction of the powerhouse and spillway
- Completion and energization of transmission line 5L005
- Transmission line construction including access road construction and maintenance, site preparation, foundation installation, tower assembly and installation and site reclamation
- Highway 29 realignment at Cache Creek East, Halfway River, Lynx Creek, Dry Creek and Farrell Creek
- Portage Mountain Quarry operations, including maintenance of access roads and stockpile areas and loading of highway trucks
- Clearing, road maintenance and road construction in areas of the future reservoir. The lower reaches of the Halfway River will be closed to boaters from September 1, 2020 to April 30, 2021. Waste wood will be burned when conditions are appropriate.

- Habitat construction and installation
- Start of construction of a shoreline protection berm in Hudson's Hope
- On-call archaeological studies, as required

For all activities described in this letter, the [necessary approvals](#) will have been obtained before work begins. Geotechnical site investigations, air quality monitoring, heritage and other field studies are ongoing. We will continue to provide [annual field study notices](#) of these activities.

For the safety of the public and workers, please use caution when hunting, shooting, or setting traps in the Site C project area.

Dam site

- **Access roads:** Crews will continue to maintain dam site access roads and existing south bank resource roads, including petroleum development roads. Site security gate enhancements will occur.
- **River diversion:**
 - River diversion has begun, with the start of construction of the upstream and downstream cofferdams. Final river closure will begin in the fall.
 - The rockfill berm will be placed across the Peace River, and when completed, it will divert the Peace River thru the two diversion tunnels.
 - The Stage 2 upstream and downstream cofferdams will continue to be built following completion of the rockfill berm, including the installation of interlocking cofferdam pile walls.
 - The removal of the inlet and outlet cofferdams is underway, and will be completed prior to final river closure.
 - The temporary fishway will begin operation upon completion of pumping of water into the outlet cofferdam, prior to removal of the outlet cofferdam.
- **Main civil works:** Construction activities will continue. This includes:
 - Excavation and material relocation on the north and south banks for the dam core trench and foundations
 - Construction of the south bank and north bank drainage tunnels
 - In-river work and dredging
 - Concrete batching
 - Riprap placement
 - Temporary debris boom anchor installation and access road construction
 - Construction of the roller compacted concrete buttress on the south bank
 - Earthfill dam preparation and other civil works
 - Rail delivery of rip rap to site
- **Generating station and spillways (GSS):**
 - Concrete will continue to be placed for the powerhouse intake areas
 - Installation of powerhouse units 1, 2, and 3 superstructures will continue

- Sections of the steel penstocks will continue to be delivered to site, where they will be assembled and encased in concrete
- Installation of penstock sections will continue
- Penstock encasement concrete will continue
- Construction of the spillway stilling basin slab will continue
- Transition block and spillway headwork construction will start
- **Turbines and generators:**
 - The turbines and generators contractor will continue with deliveries to Areas 24 and 27.
 - The on-site shop fabrication work is resuming.
 - The turbines and generators contractor has mobilized to site and will begin installation in the powerhouse in mid-October.
 - Delivery and installation of draft tube elbows, tooling sea cans, and other equipment and components will be delivered to the powerhouse in the coming months.
 - Welding will begin in the powerhouse.
- **Site C substation:** The substation contractor will complete the substation construction work. BC Hydro will energize and begin operating the substation.
- **Transmission line:** The 138kV transmission lines connecting the Site C substation to Fort St. John and Taylor will be energized. BC Hydro will begin operation of the lines.

Public roads and highways

- **Highway 29**
 - **Cache Creek East:** Construction of the embankment will be completed, and construction of the highway realignment and bridge will begin.
 - **Halfway River:** Construction will continue on the highway realignment and bridge. A new distribution line will be constructed west of Halfway River.
 - **Farrell Creek:** The contractor will mobilize to the site, beginning work on the highway realignment and bridge. This work may include clearing and waste wood removal.
 - **Dry Creek:** Construction will have begun on the highway realignment and a new bridge. This work may include clearing and waste wood removal, disposal and burning.
 - **Lynx Creek:** Construction of the highway realignment and new bridge will begin. This work may include clearing and waste wood removal, disposal and burning.

Peace River/reservoir

- **Charlie Lake outfall:** Weighting and armouring of the Charlie Lake outfall system will continue.
- **River closure:** A short section of the Peace River is closed at the dam site as we continue in-river works and place debris management systems across the Peace and

Moberly rivers. A [portage program](#) is available from May 15 to September 15 every year to move non-motorized boats around the area.

- **In-river debris management systems:** Debris management structures have been installed on the Peace River and the Moberly River. Debris is regularly being cleared from the structures.
- **Fish habitat enhancement project:** Surveying work may take place at the downstream fish habitat enhancements.
- **Wildlife habitat structure program:** Construction and installation of snake hibernacula and eagle nest platforms are planned, assuming suitably dry soil conditions. Monitoring of bat boxes will continue. Unoccupied eagles' nests may be removed, in advance of river diversion.
- **Archaeology:** On-call archaeological studies, as required, anywhere on the project.
- **Reservoir clearing**
 - Clearing, road construction, and burning of waste wood will occur in the following areas:
 - North and south bank of the eastern reservoir.
 - Middle reservoir between Cache Creek and Halfway River.
 - Halfway River drainage: The lower reaches of the Halfway river will be closed for clearing, from September 1, 2020 to April 30, 2021.
 - The north and south banks of the Peace River in the western reservoir, from Halfway River to Farrell Creek.
 - Merchantable trees will be transported to local mills.
 - Road maintenance may occur on existing roads in the reservoir area.

Hudson's Hope shoreline protection

The berm contractor will mobilize crews and equipment to the berm site. Construction will begin on the Hudson's Hope shoreline protection berm. This may include clearing and waste wood removal/disposal. Riprap may be hauled from Portage Mountain and stockpiled at the berm site. In-river works may occur including the installation of instrumentation and berm construction.

Transmission works

- **Access road maintenance:** Road maintenance on access roads will occur, to provide safe access to the transmission line and tower site right-of-way.
- **Transmission line construction:**
 - Transmission line 5L005 will be completed, energized, and begin operation.
 - Transmission line 5L006 construction will continue, with foundation installation and tower assembly. The two existing lines within this right-of-way will be removed.

Production and transport of materials

- **West Pine Quarry:** Riprap will be produced and hauled from West Pine Quarry along Highway 29 for highway construction.
- **Portage Mountain Quarry:**

- Operations will continue at Portage Mountain Quarry.
- This includes hauling, processing and stockpiling of riprap.
- Access roads will continue to be maintained.
- Riprap and other quarry materials will be hauled to a stockpile area on the corner of 400 Road and Canyon Drive, as well as construction sites at Cache Creek, Dry Creek, Halfway River, Farrell Creek, Lynx Creek, and the Hudson's Hope berm.
- **85th Avenue Industrial Lands:** Work will continue at the Industrial Lands. This includes the preparation of offices, a parking lot, and laydown/stockpile areas.
- **Conveyor belt system:** The conveyor system is operating as needed.

Environmental Assessment Certificate

Environmental Assessment Certificate #E14-02 (EAC) for the project consists of Schedule A, the project description, and Schedule B, the conditions under which the project must be constructed and operated. If BC Hydro wishes to make a change to either Schedule A or Schedule B of the EAC, we are required to submit a written request to the Environmental Assessment Office, which then consults with regulatory agencies, Indigenous groups and/or the public on the request and issues a written decision.

To date, we have requested and been granted seven amendments to the EAC. These are:

- Amendment 1 – regarding design changes to the generating station and spillways.
- Amendment 2 – regarding design changes to the Halfway River Bridge within the Halfway River Highway 29 realignment.
- Amendment 3 – regarding the use of West Pine Quarry, in addition to the already approved Portage Mountain Quarry, as a source of quarry and excavated material for the construction of the Highway 29 realignment, Hudson's Hope shoreline protection, and areas along the reservoir requiring protection during reservoir filling.
- Amendment 4 – regarding the selective use of mechanical clearing in riparian zones during reservoir clearing when it is unsafe to undertake manual clearing.
- Amendment 5 – regarding a change in the alignment of Highway 29 at Cache Creek.
- Amendment 6 – regarding the expansion of the worker accommodations camp within the dam site area.
- Amendment 7 – regarding changes to the designs of Highway 29 crossings at Farrell, Dry and Lynx Creeks

Water Licences and Leaves to Commence Construction/Diversion

BC Hydro holds Water Licences for the diversion and use of water, the storage of water, and for the temporary and permanent fish passage facilities. During the course of construction, we will apply for a series of Leaves to Commence Construction (LCCs) under the Water Licences in order to construct particular project works or components of project works. Construction-related activities under the LCCs are also independently reviewed by the Independent Engineer and the Independent Environmental Monitor as required by the Water Licences.

To date, BC Hydro has obtained LCCs for:

- Initial works
- Relocated Surplus Excavation Material (RSEM) storage areas
- North and south bank excavations
- South bank stage 1 cofferdam
- Clearing of the eastern reservoir
- North bank cofferdams and diversion tunnel works
- Roller-compacted concrete (RCC) buttress foundation preparation and RCC placement
- Geotechnical investigations for the Hudson's Hope shoreline protection and Halfway River debris boom
- Earthfill dam excavation, foundation preparation, fill placement and approach channel foundation preparation and placement
- Generating station civil works and spillways civil works
- Construction of the temporary fish passage facility
- Stage 2 cofferdams and river diversion, including debris boom facilities on the Peace and Moberly Rivers
- Water licences for temporary and permanent fish passage facilities
- Middle reservoir clearing

BC Hydro also obtained a Leave to Commence Diversion (LCD) in June 2020, covering placement of the rockfill berm into the Peace River, diversion of water through the diversion tunnels, and construction of the stage 2 cofferdams. A separate LCD was also issued in August 2020, authorizing the commissioning of the Temporary Fish Passage Facility.

BC Hydro has requested Leaves to Commence Construction for Western Reservoir Clearing and the Hudson's Hope Berm. These requests are currently under review and decisions are anticipated in early fall 2020.

Notice of completed activities

The following work, described in previous notifications, is complete or is anticipated to be complete by the date of issuance of this letter:

- Diversion tunnels and gates
- Temporary fish passage facility
- Peace River debris boom
- Security gate upgrades
- Peace Canyon substation

What to expect

During this time period, the following can be expected:

- [Permanent navigational restrictions](#): Boaters no longer have access to the Moberly River and the Peace River, near the dam site, now that debris structures have been installed. Public safety signs and beacons have been installed on both banks of the Peace River, and on both sides of the dam site, to mark the active construction area.

- There will be project-related traffic on public roads leading to the dam site, transmission corridor, reservoir and Highway 29, as we continue to haul materials, equipment, rock, and timber. This will include increased industrial traffic on resource roads and public roads from Chetwynd leading to the site on the south bank.
- Day, night and weekend shifts are anticipated for the duration of the project.
- Traffic control will be intermittently in place for construction and investigation activities along Highway 29. This may cause minor traffic delays. Visit drivebc.ca for the latest traffic updates.
- Noise will occur near the construction areas.
- Noise and vibration will result from blasting and other works in the quarries. Hauling may occur at night.
- There will be construction occurring around the Peace River at the dam site.
- We are monitoring air quality in the Site C project area. This data is being added to the Ministry of Environment's [B.C. Air Quality Monitoring Data](#). The Ministry uses this data to report on air quality trends. In the event of poor air quality, the Ministry will release air quality advisories through a notification list. This notification list currently includes the regional media, various public and private sector offices, as well as members of the public. If you are interested in being part of this notification list, please email sitec@bchydro.com.

Learn more

BC Hydro is committed to providing you with information about Site C construction activities and has established several ways that you can learn more about the project.

We would be happy to come to your community to discuss the upcoming work in more detail, report on results of field studies and implementation of mitigation plans, and discuss how best to communicate with your community.

Please do not hesitate to contact me should you wish to arrange a meeting or have any questions about any information described in this letter.

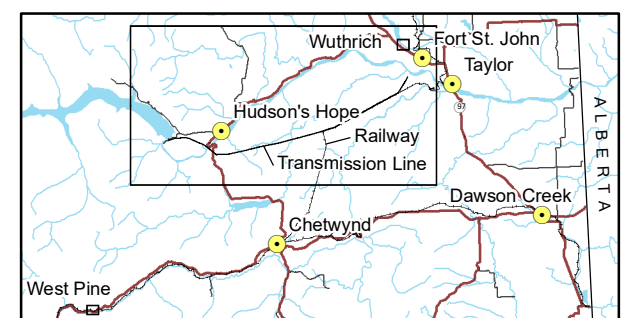
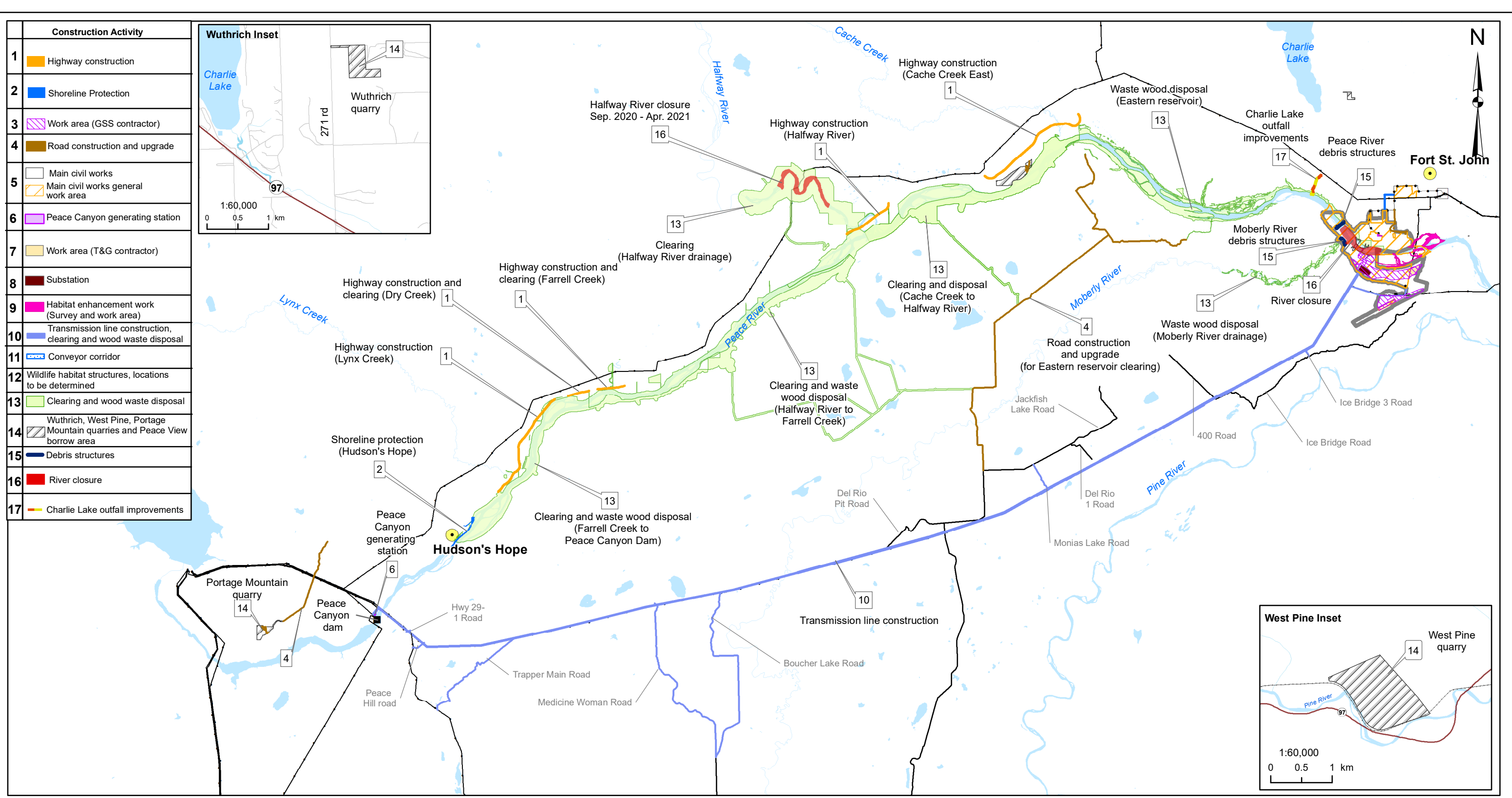
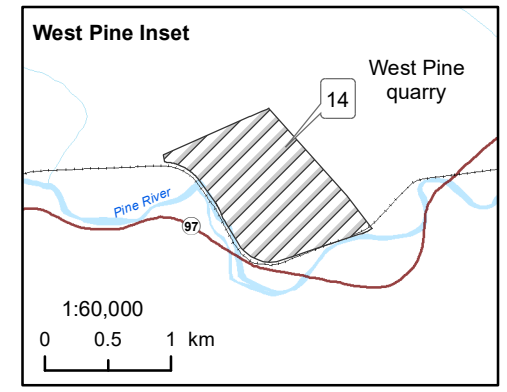
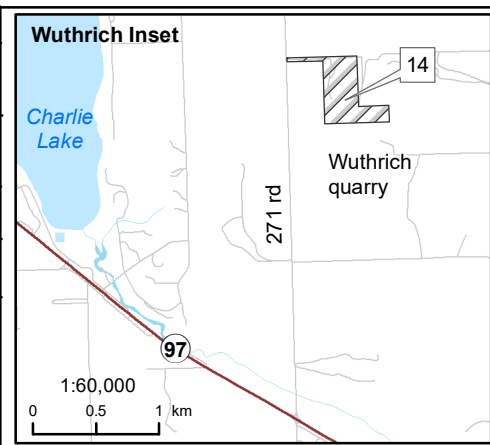
Kindest regards,

A handwritten signature in blue ink, appearing to read "Ken McKenzie", enclosed within a hand-drawn oval.

Ken McKenzie

Executive Vice-President, Site C

Construction Activity	
1	Highway construction
2	Shoreline Protection
3	Work area (GSS contractor)
4	Road construction and upgrade
5	Main civil works Main civil works general work area
6	Peace Canyon generating station
7	Work area (T&G contractor)
8	Substation
9	Habitat enhancement work (Survey and work area)
10	Transmission line construction, clearing and wood waste disposal
11	Conveyor corridor
12	Wildlife habitat structures, locations to be determined
13	Clearing and wood waste disposal
14	Wuthrich, West Pine, Portage Mountain quarries and Peace View borrow area
15	Debris structures
16	River closure
17	Charlie Lake outfall improvements



Map Notes:
 1. Datum: NAD83
 2. Projection: UTM Zone 10N
 3. Base Data: Province of B.C.

The construction activities presented in this map are indicative only and may change as a result of procurement and project planning advancements.

1:250,000 0 10 km

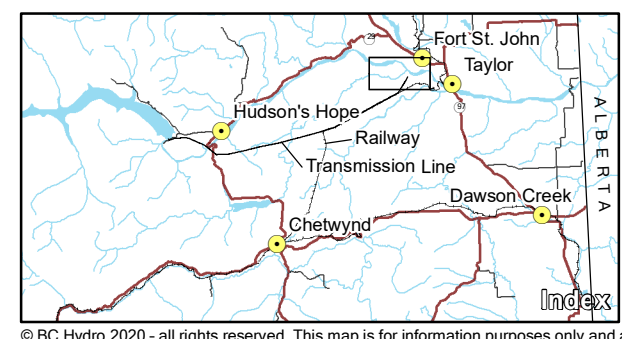
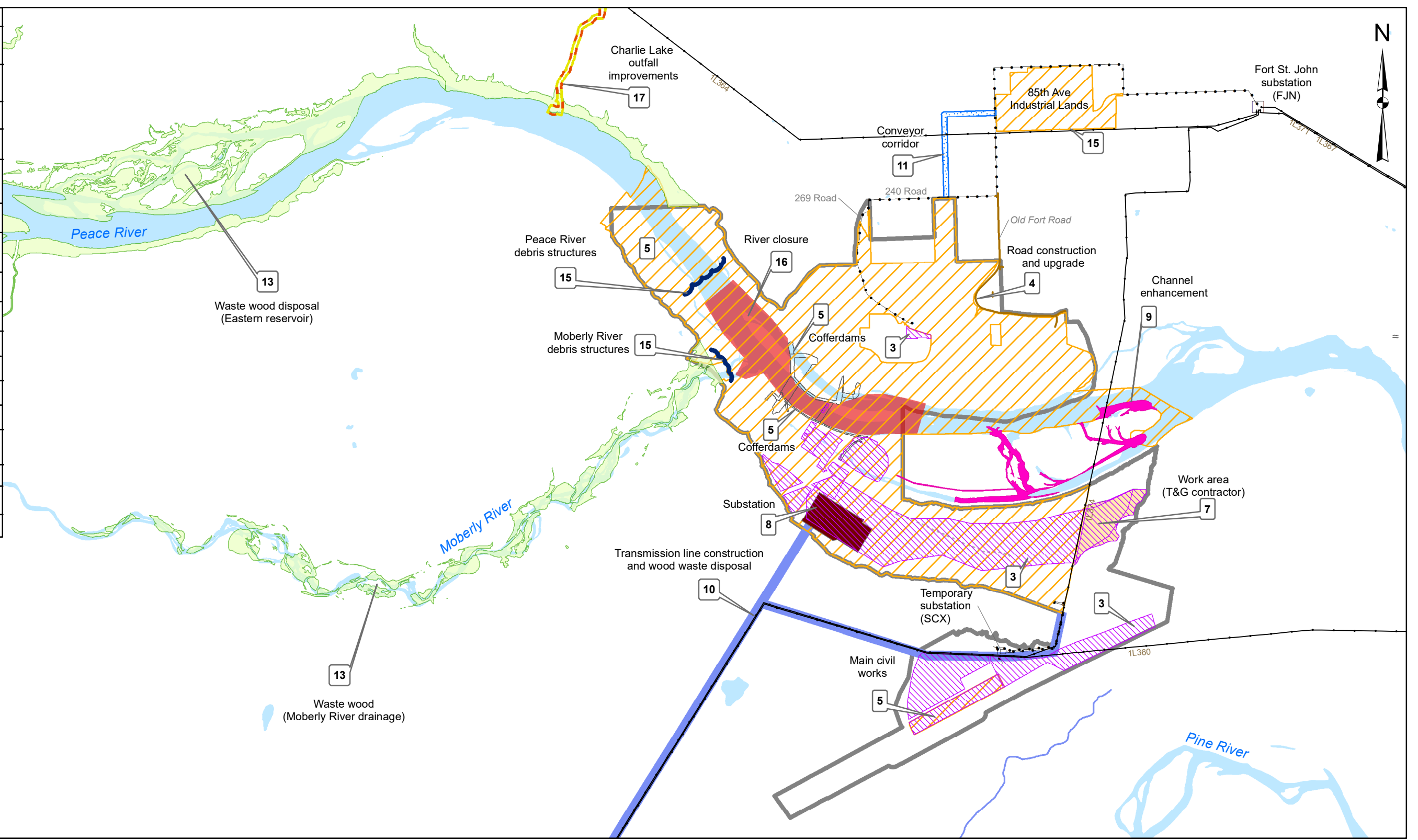
BC Hydro

**Construction Activities
October - December 2020**

Date	Sep. 1, 2020	DWG NO	1016-N11-00950-1	R 0
------	--------------	--------	------------------	-----

Path: X:\Acad\Projects\First Nations\Construction_Activities_1016_N11-00950-1.mxd

Construction Activity	
1	Highway construction
2	Shoreline Protection
3	Work area (GSS contractor)
4	Road construction and upgrade
5	Main civil works Main civil works general work area
6	Peace Canyon generating station
7	Work area (T&G contractor)
8	Substation
9	Habitat enhancement work (Survey and work area)
10	Transmission line construction, clearing and wood waste disposal
11	Conveyor corridor
12	Wildlife habitat structures, locations to be determined
13	Clearing and wood waste disposal
14	Wuthrich, West Pine, Portage Mountain quarries and Peace View borrow area
15	Debris structures
16	River closure
17	Charlie Lake outfall improvements



Map Notes:
 1. Datum: NAD83
 2. Projection: UTM Zone 10N
 3. Base Data: Province of B.C.

The construction activities presented in this map are indicative only and may change as a result of procurement and project planning advancements.

1:50,000 0 2 km

BC Hydro

**Construction Activities
October - December 2020**

Date	Sep. 1, 2020	DWG NO	1016-N11-00950-2	R 0
------	--------------	--------	------------------	-----

Path: X:\AcGIS\Projects\First Nations\Construction_Activities_1016_N11-00950-2.mxd