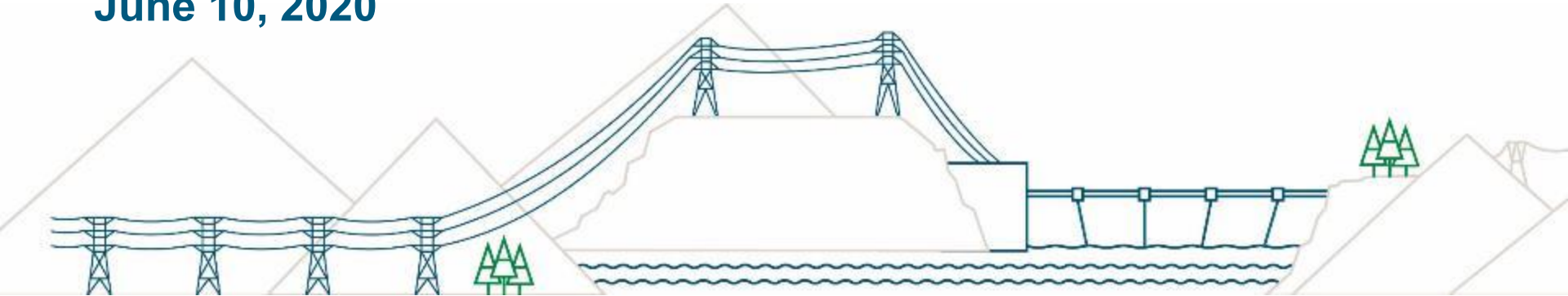


Site C Clean Energy Project

Regional Community Liaison Committee Project Briefing

June 10, 2020



On Dam Site Construction Update



On Dam Site Construction Update

- Left Bank
 - Worker accommodation lodge expansion
 - 85th Avenue Industrial Lands & till conveyor
 - Diversion tunnels, portal structures, fish passage
 - Cofferdams
 - Core trench & earthfill dam
- Right Bank
 - Powerhouse concrete placement
 - Powerhouse structural steel placement
 - Penstock installation
 - Dam Buttress RCC placement (planned for 2020)
 - Debris Booms
- Preparing for Diversion

ATCO Two Rivers Lodge Phase 2 Expansion



Till Conveyor System



Left Bank: River Diversion Inlet Portals



Left Bank: Diversion Tunnel Outlet Portals



Temporary Upstream Fishway (TUF)

Construction Progress:

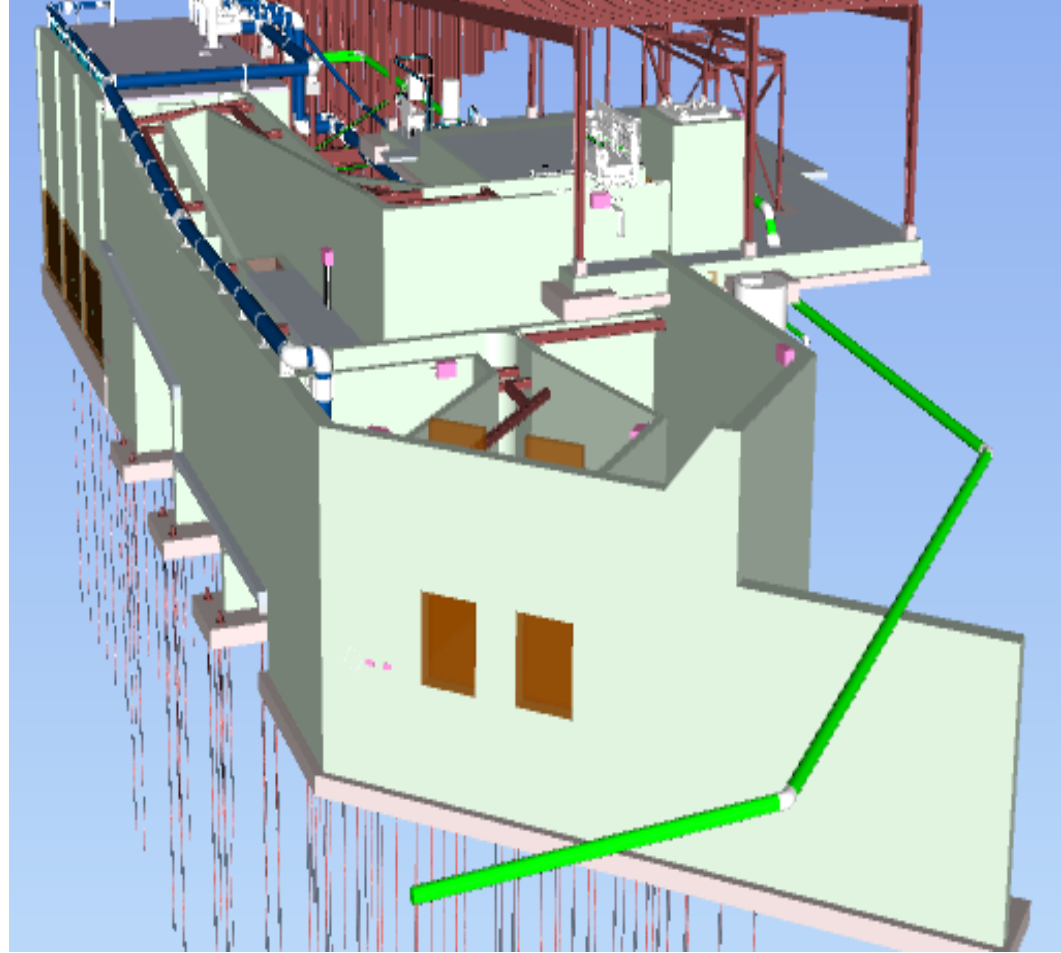
Civil/Structural – 99%

Mechanical – 85%

Electrical – 60%

Commissioning Completion - July 31

Operational – August 15



Left Bank: River Diversion Outlet Portals



Left Bank: Cofferdams





Left Bank Dam Core Trench

Right Bank Dam Core Trench

Right Bank: Powerhouse, Intakes and Service Bay



Penstock Units 1, 2, 3, & 6



Powerhouse Structural Steel Placement



Right Bank: Spillway Winter Cladding in Place



Dam Buttress RCC Placement



Debris Management Booms



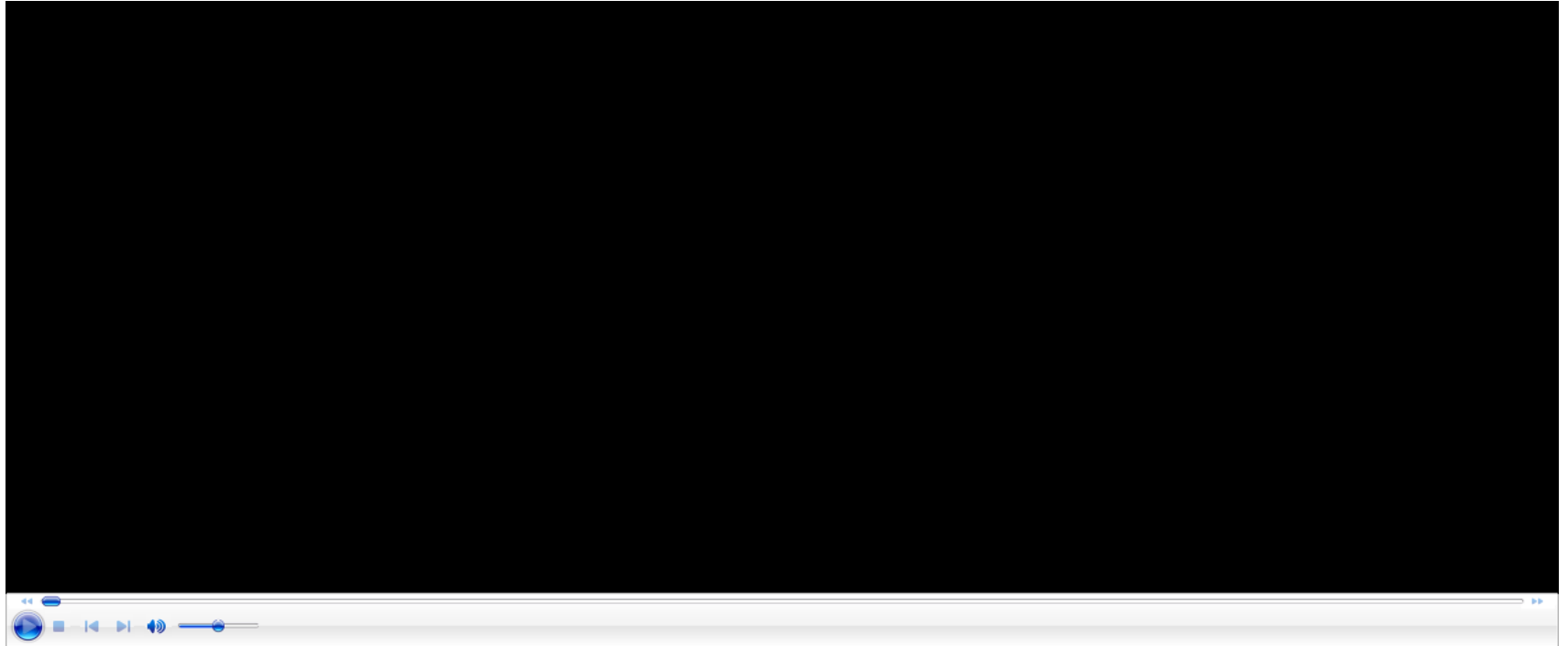
04/06/2020 12:47







Construction update – Spring 2020



Off Dam Site Construction Update

- Transmission Work
- Highway 29 realignment
- Hudson's Hope Shoreline Protection
- Reservoir clearing work

Transmission Work



South Bank Sub-Station



Completed protection and control panels inside of the SBK control room



Technician confirming connectivity to Sundance Lakes Substation near Chetwynd

Transmission Line



Highway 29 Realignment Segments



Construction Schedule Start to Finish

Lynx Creek – 8 km
Dry Creek - 1.5 km
Farrell Creek - 2 km
Farrell Creek East - 3 km

2019 to 2023
2020 to 2022
2020 to 2023
2021 to 2023

Halfway River – 4 km
Cache Creek West – 4 km
Cache Creek East – 6 km

2018 to 2023
2018 to 2021
2019 to 2023

Highway 29 realignment: Cache Creek East



Cache Creek East Artist Rendering



Highway 29 realignment – Cache Creek West



Highway 29 realignment – Halfway River



Halfway River Artist Rendering



Highway 29 realignment – Farrell Creek



Farrell Creek Artist Rendering



Highway 29 realignment – Lynx Creek East



Highway 29 realignment – Lynx Creek West



Lynx Creek Artist Rendering



Portage Mountain Quarry





Hudson's Hope shoreline protection



Location	Type of shoreline protection
Zone A: Below the residential area and extends just downstream of the hotel on Clarke Ave	1,650 metre berm
Zone B: Below the light industrial land	550 metre slope flattening and armoring of the shoreline
Zone C: Below the municipal sewage treatment lagoons	450 metre berm

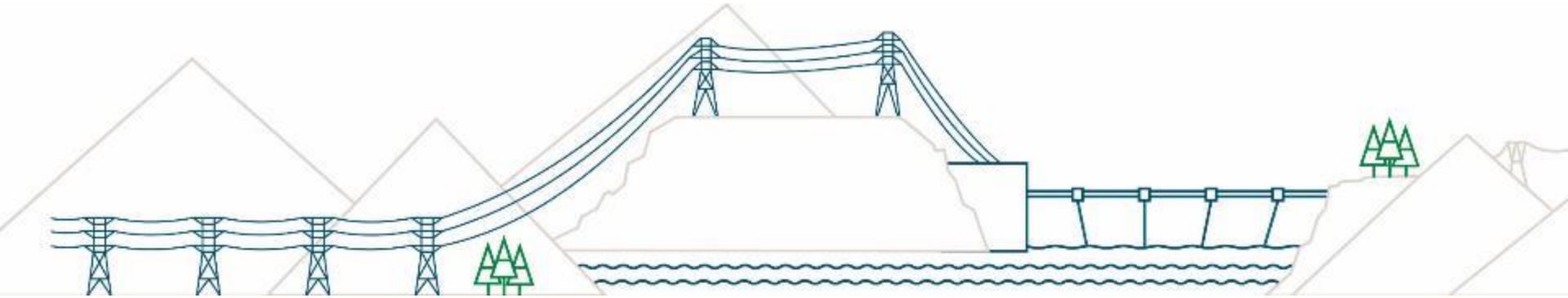
Reservoir Clearing and Debris Management



Fall Winter Clearing work:

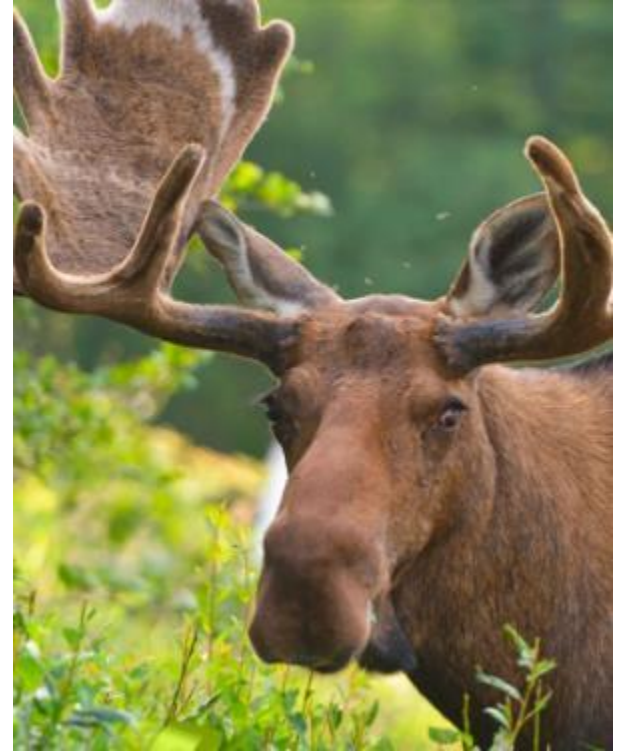
- **Halfway River Drainage**
- **Western Reservoir South Bank, HR to FC Phase 1**
- **Western Reservoir North Bank, HR to FC**

Diversions Fish and Wildlife Programs Update



Mitigation Commitments

- Headpond vegetation clearing
- Animal den removal
- Beaver telemetry study
- Aerial reconnaissance
- Bank swallow colony exclusion
- Fish passage
- Fish stranding surveys/salvage



Headpond Vegetation Clearing

- Remove cover and habitat suitability, discourages animal use



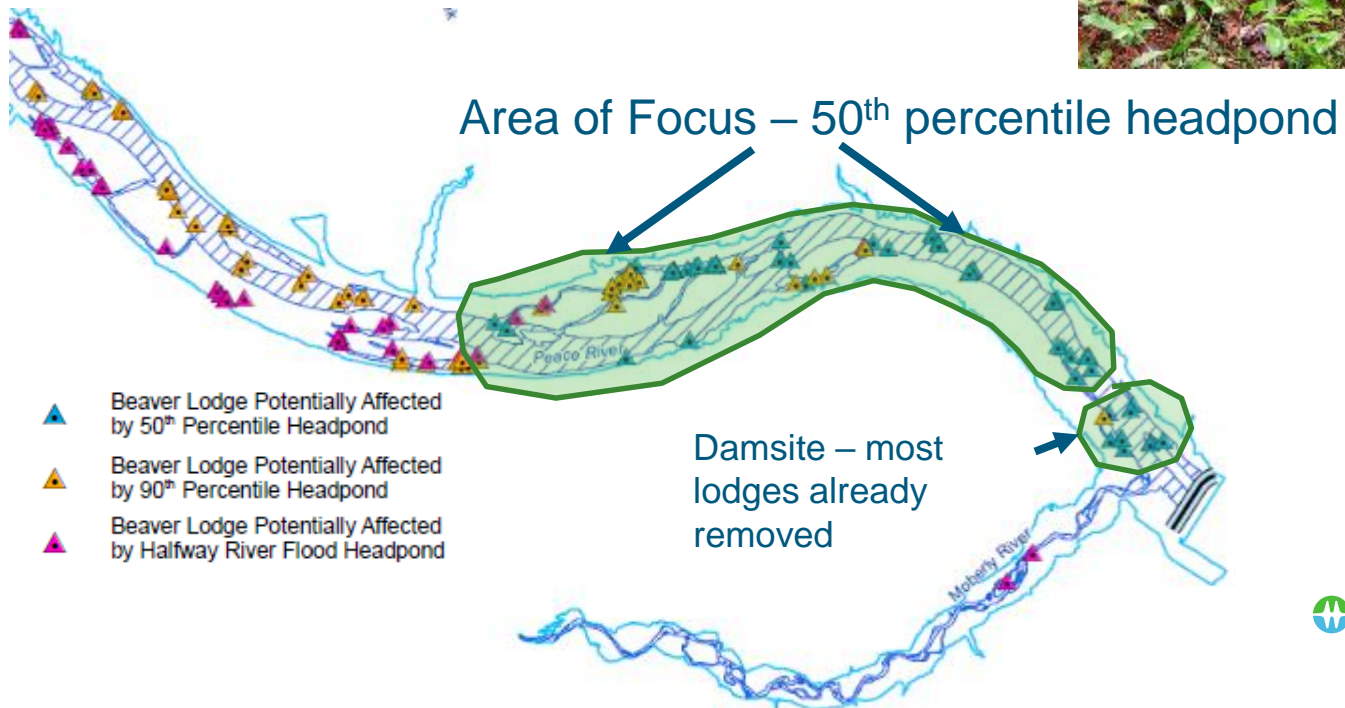
Animal Den Removal

- Seek out animal dens at risk of winter flooding in 50th percentile headpond area.
- Remove to discourage use



Beaver Telemetry Study

Research how beavers respond to headpond in winter 2020-2021



Beaver Telemetry Study

- Live trap ~15 adult beavers, apply tail mounted radio transmitter. Release where caught
- Monitor from summer 2020 – spring 2021
- Present findings in winter and spring 2021
- Discuss next steps in spring 2021



Aerial Reconnaissance

- Aerial drone video taken during high inflow events
- Focus on terrestrial areas that are flooded
- Report observations



Bank Swallow Colony Exclusion

- SARA protected species.
- Colonies in headpond could be flooded during summer rainstorms
- Experimentally use netting to preclude access to colonies in spring 2021



Temporary Upstream Fish Passage Facility

- Operational from 2020 to Reservoir Filling
- Ensures upstream migration remains possible throughout River diversion

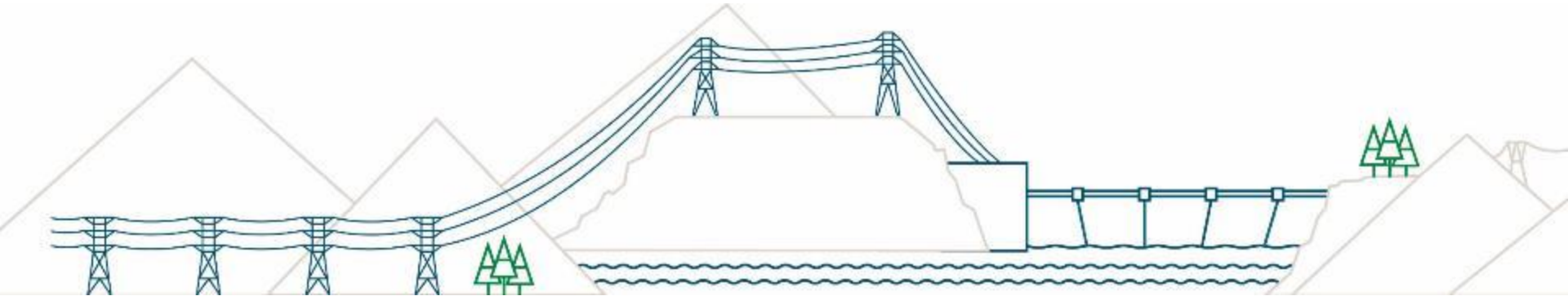


Fish Stranding — Salvage

- Recovery of fish stranded during receding headpond. Research when, how and where to do it
- An extension of existing program



Mitigation Update



Funding Updates

- **GO Fund**
 - 15th Funding Intake update
- **Indigenous & Traditional Use Fund**
- **Peace Agricultural Compensation Fund Public Meeting**



Jobs and business opportunities



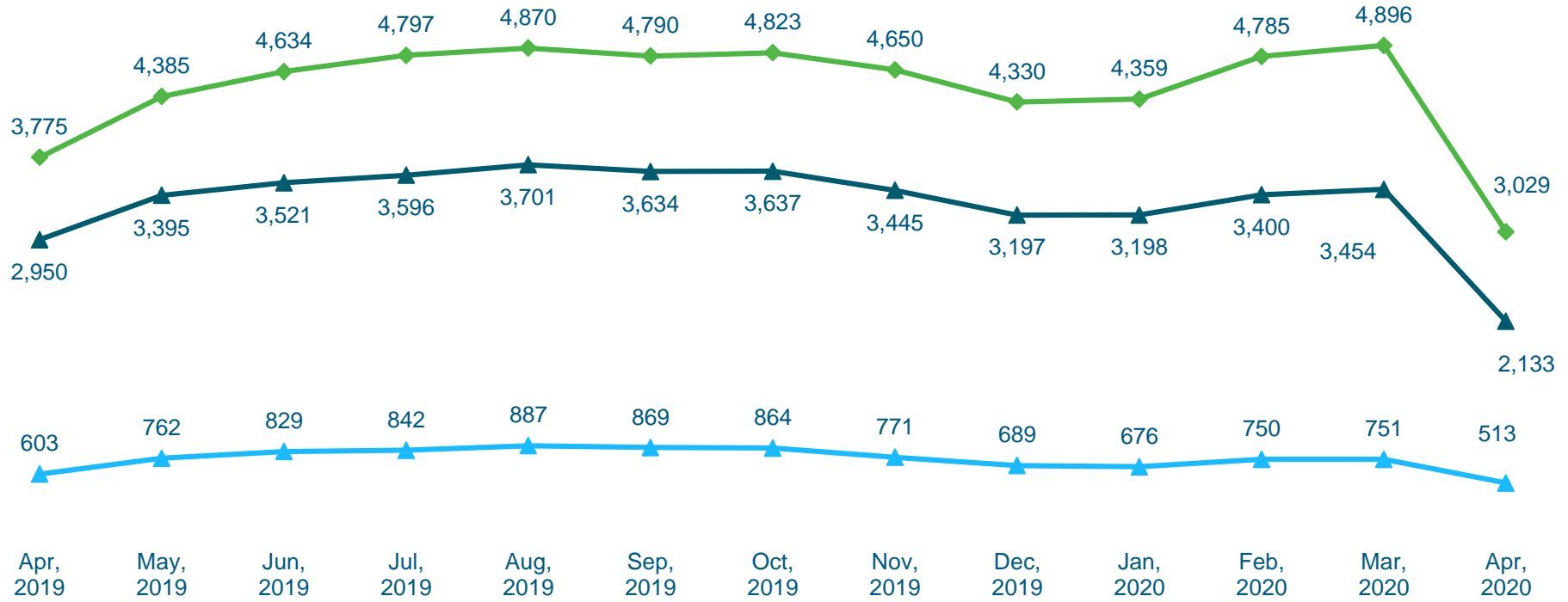
Employment statistics

Note: The April workforce numbers reflect the March 18 decision to scale back construction activities on the dam site

- BC Hydro requires all major contractors to report employment information.
- Total of **3,029** workers in April 2020; **2,133** from B.C (70%). Total of **513** workers from PRRD (22%).

Site C Employment Statistics – April 2020			
	# of Total Workers	# of BC Primary Residents	% of BC Workers
Construction and Environmental Contractors	2,289	1,457	64%
Engineers and Project Team	740	676	91%
Total Workforce	3,029	2,133	70%

Site C jobs snapshot (April 2020)



2020 Q1 Regional Business Participation

Companies engaged by BC Hydro and Site C contractors to provide goods & services in relation to Site C construction between January – March 2020

Community	Number of Businesses	Community	Number of Businesses
Cecil Lake	1	Moberly Lake	3
Charlie Lake	15	Pouce Coupe	2
Chetwynd	13	Prince George	30
Dawson Creek	27	Rose Prairie	1
Fort Nelson	1	Taylor	9
Fort St. John	227	Tumbler Ridge	4
Hudson's Hope	5	Wonowon	1
Total		339	



BC Hydro

Power smart