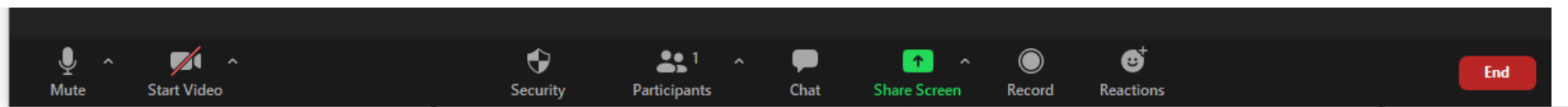


Regional Community Liaison Committee Project Briefing

September 29, 2021

Zoom Meeting Reminders

We'll be using a few basic tools, which you can find at the bottom of the screen



Mute/unmute your mic
& turn your video on/off

Open the chat panel for
questions / feedback

Site C COVID-19 Update

Shanna Mason

Dam Site Construction Update

Jim McPherson

Dam Site Construction Update

- **Main Civil Works**
- **Powerhouse, Intakes, Penstocks, and Spillway**
- **Right Bank Foundation Enhancements**
- **Turbines and Generators**

Dam Site Construction Update



Main Civil Works Dam and Core Trench



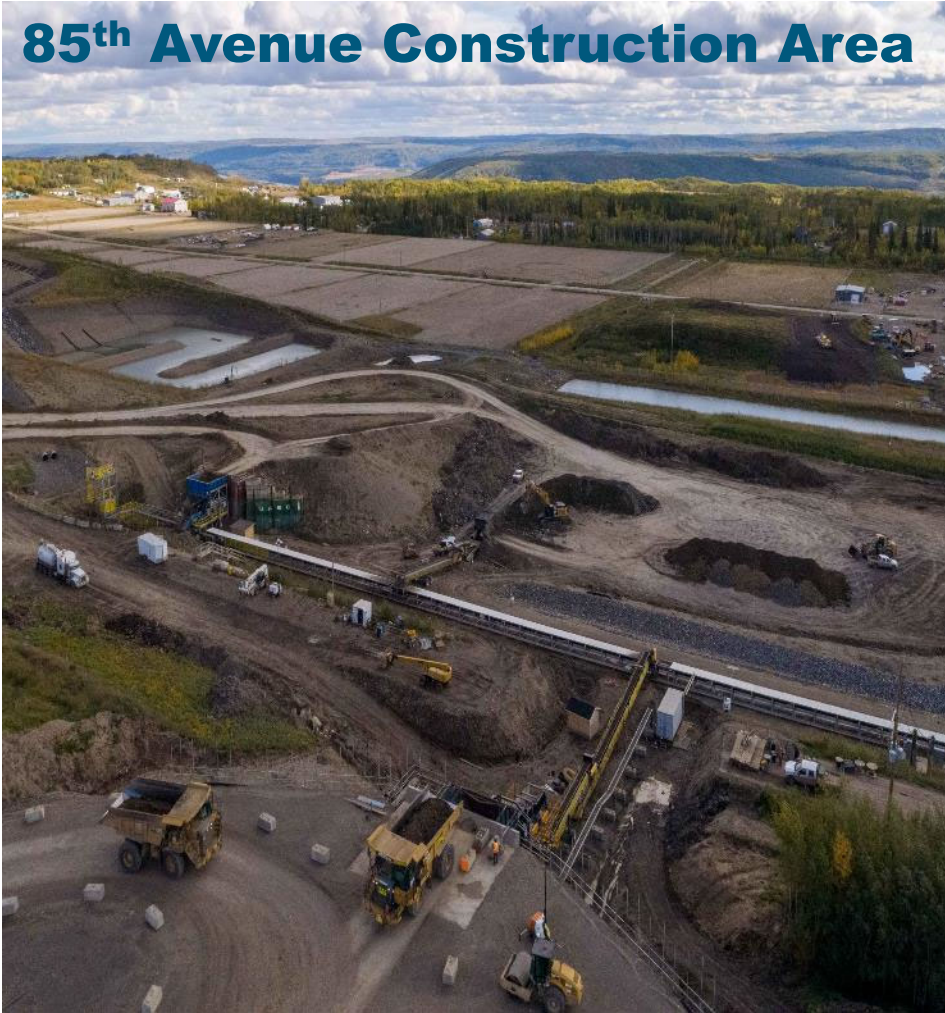
Roller Compacted Concrete (RCC) Dam Buttress



Approach Channel



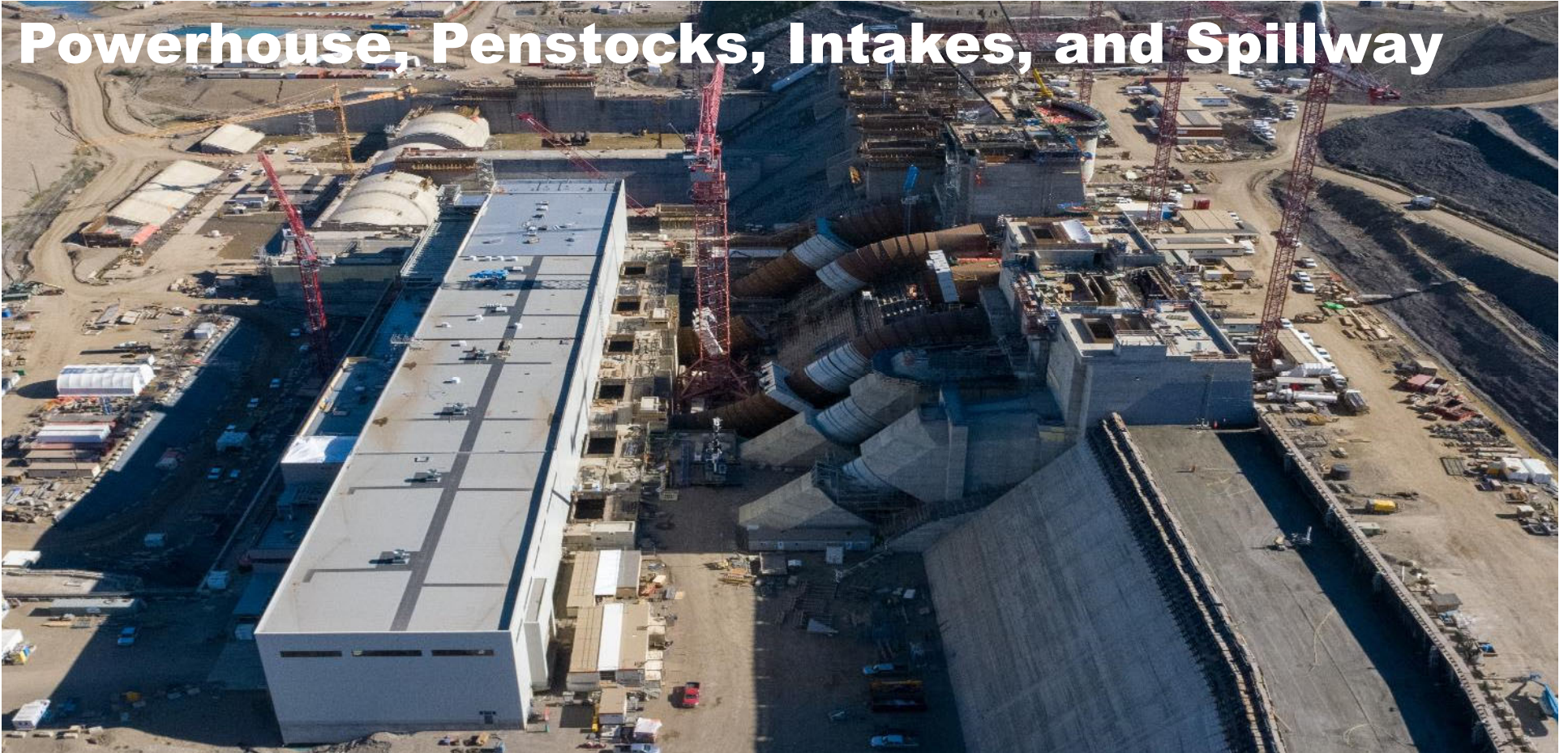
85th Avenue Construction Area



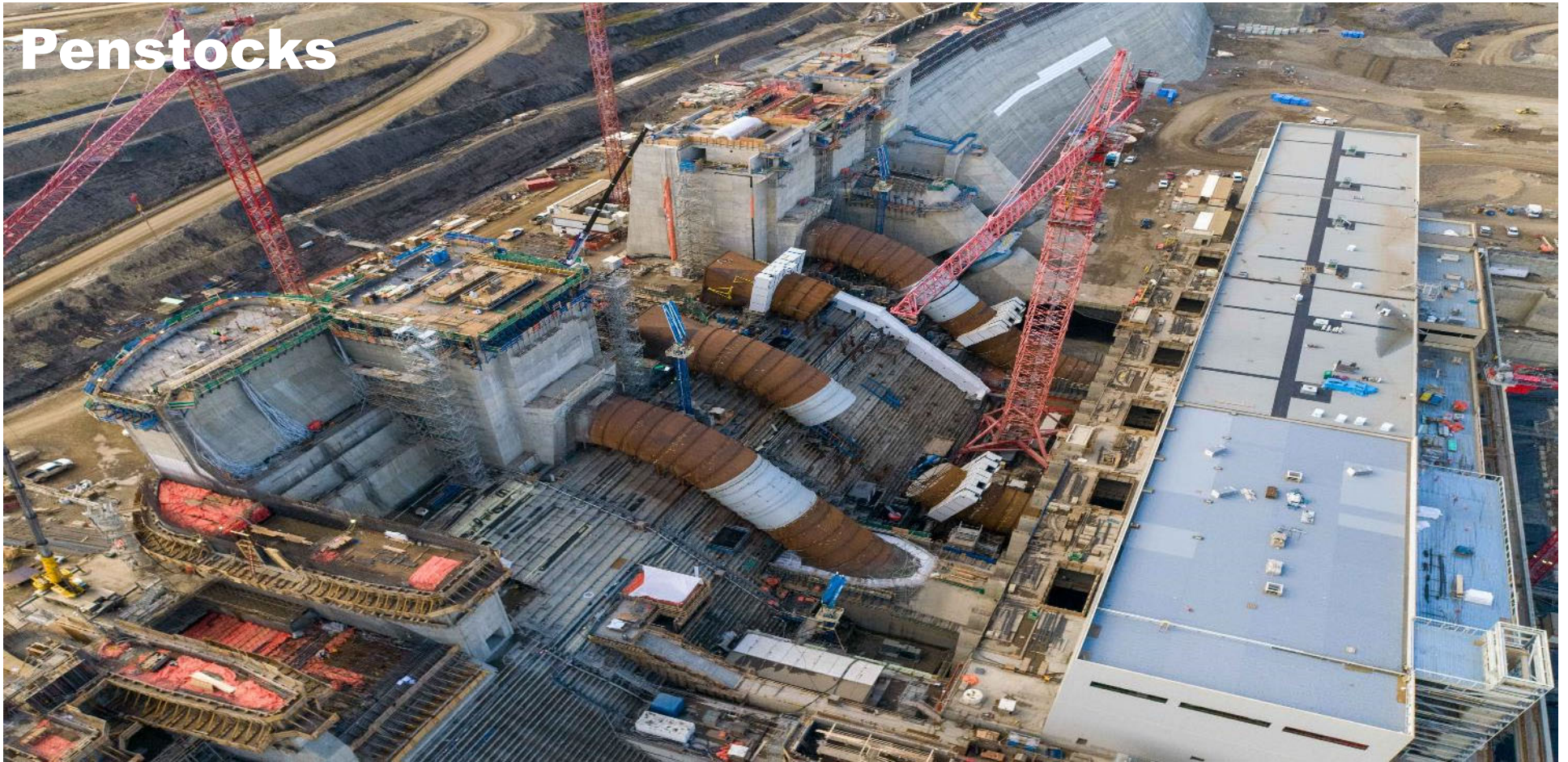
MSE Wall Mechanically Stabilized Earth Wall

 **BC Hydro**
Power smart

Powerhouse, Penstocks, Intakes, and Spillway



Penstocks



Intakes



Spillway, Stilling Basin and Headworks

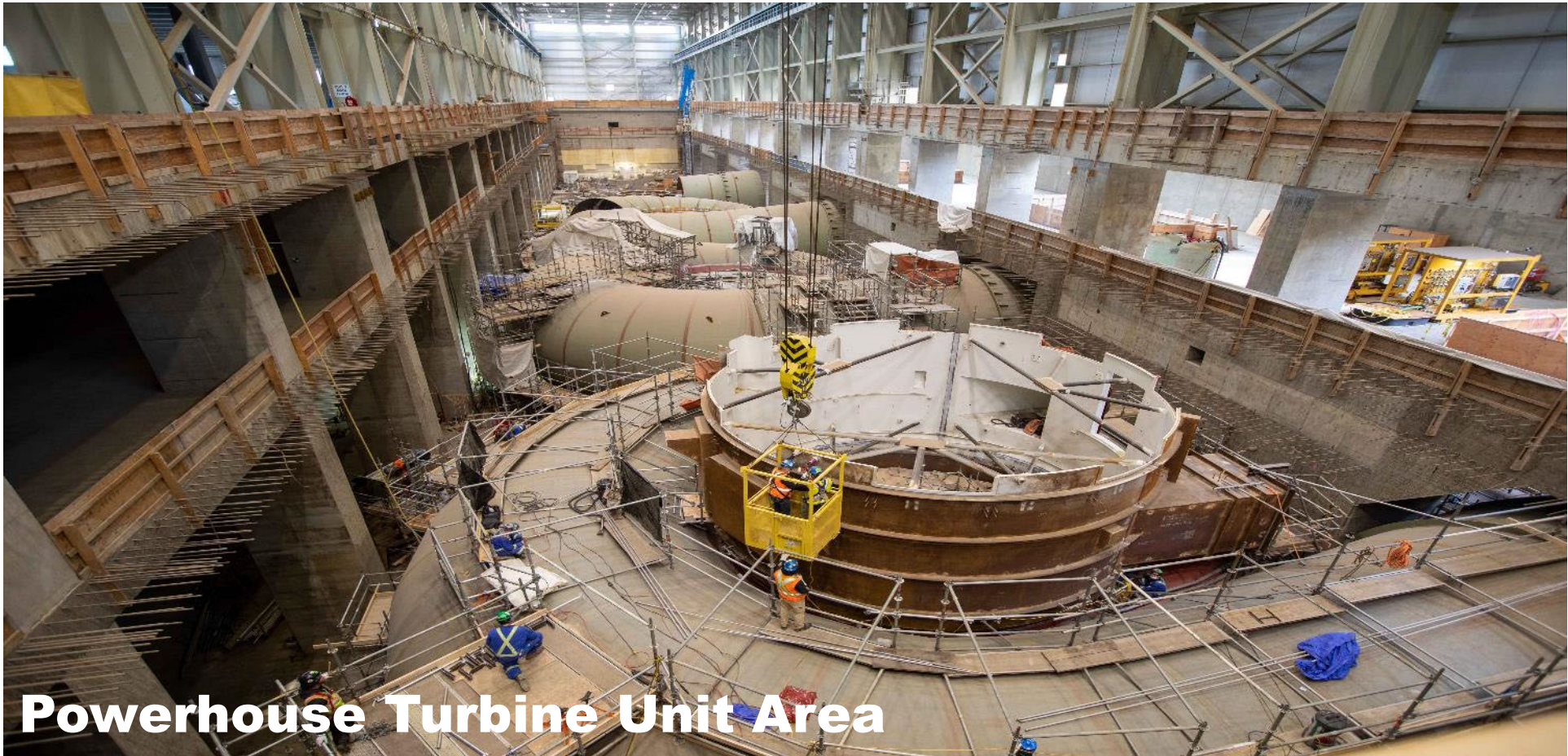


Powerhouse Structural Steel Installation





Upper Pit Liner



Powerhouse Turbine Unit Area

Teco Pit (Area E) Material Source & Ice Bridge Road Upgrades



- Road, including Right-of-Way ~ 63 ha - Crown Land
- Area E Mine Site ~ 55 ha - Crown land that is licenced to BC Rail; BCH also seeking crown land tenure

Questions?

BC Hydro
Power smart

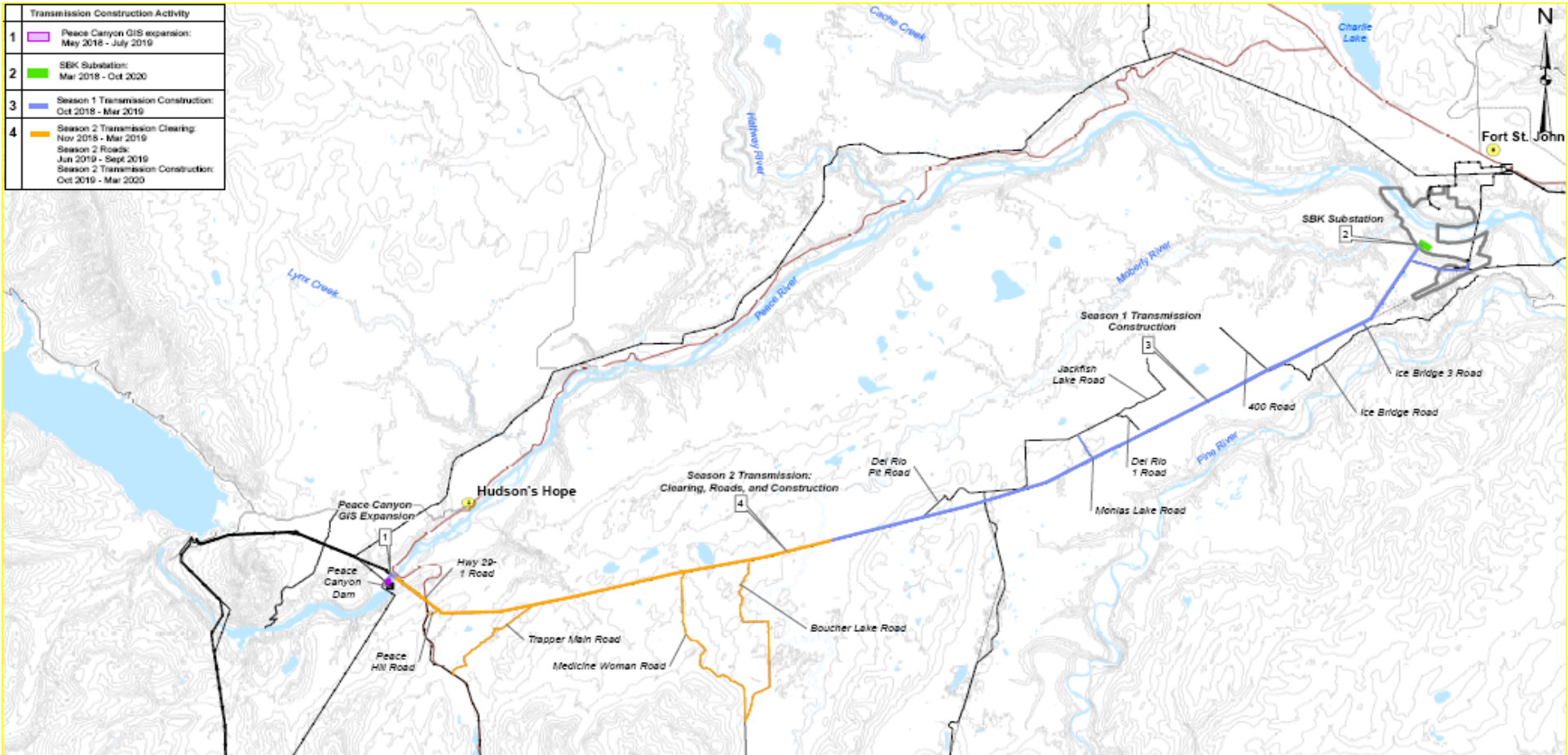
Off Dam Site Construction Update

Matt Drown

Off Dam Site Construction Update

- **Transmission**
- **Highway 29 realignment**
- **Portage Mountain Quarry**
- **Hudson's Hope Shoreline Protection**
- **Reservoir Clearing**

Transmission Construction Activity	
1	Peace Canyon GIS expansion: May 2018 - July 2019
2	SBK Substation: Mar 2018 - Oct 2020
3	Season 1 Transmission Construction: Oct 2018 - Mar 2019
4	Season 2 Transmission Clearing: Nov 2018 - Mar 2019 Season 2 Roads: Jun 2019 - Sept 2019 Season 2 Transmission Construction: Oct 2019 - Mar 2020



**Flying
Sockline**



5L6 Installing Center Jumper



Highway 29 Bridge Realignment Segments



Construction Schedule Start to Finish

Lynx Creek – 8.1 km	2019 to 2022	Halfway River – 3.7 km	2018 to 2022
Dry Creek - 1.4 km	2020 to 2022	Cache Creek West – 4.0 km	2018 to 2020
Farrell Creek – 1.9 km	2020 to 2022	Cache Creek East – 8.6 km	2019 to 2022
Farrell Creek East – 3.0 km	2021 to 2022	Highway decommissioning:	2022 to 2023



Cache Creek East Realignment: Bridge Foundation Construction

Halfway River Bridge



Farrell Creek East: Facing West Over the New Highway Alignment



Farrell Creek Realignment: Bridge Foundation Construction Facing East





Dry Creek realignment: Bridge deck formwork installation

Lynx Creek Realignment: Eastern Embankment Construction and Detour



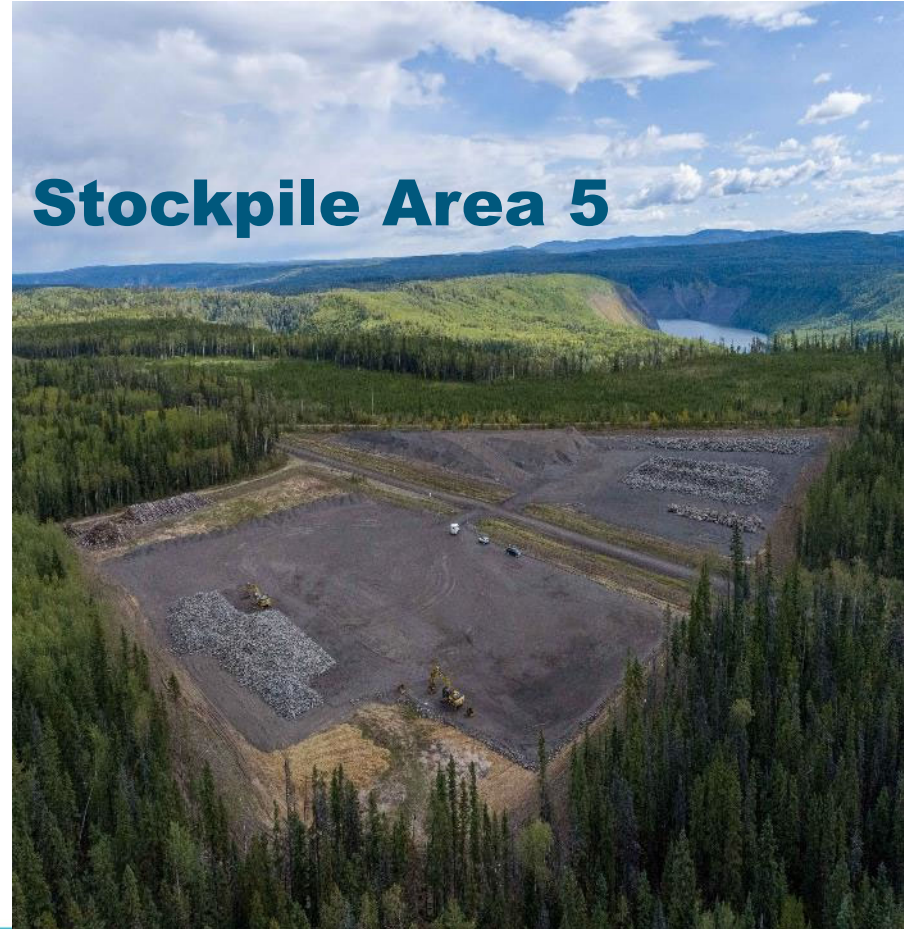


Lynx Creek Realignment: Bridge Foundation Construction

Portage Mountain Quarry



Stockpile Area 5



Hudson's Hope Shoreline Protection: Eastern End of Berm Construction





Hudson's Hope Shoreline Protection: Middle Section Showing DA Thomas Access

Hudson's Hope Slough



Hudson's Hope Slough



**Fall/Winter Clearing work:
Halfway River to Farrell Creek – Phase 2
Farrell Creek to Peace Canyon**





Equipment fording at Hawk Island

**South bank clearing:
Hauling merchantable timber**



Questions?

BC Hydro
Power smart

Shoreline Enhancement Work

Katrina Kelly

Background

- Goal is to create a diversity of Site C reservoir shoreline habitats for fish and increase the area of productive shallow water fish habitat
- Fisheries Act Authorization (for Main Civil Works and Project Operations) requires BC Hydro to construct Site C reservoir shoreline fish habitat enhancements
- This program is specific to fish habitat in the reservoir – it is not associated with the Wetland Compensation Program

Shoreline Contouring - Map



Project Scope

- Develop 33 ha of shallow water (littoral) habitat (elevation 456 m – elevation 459 m):
 - 22 ha Wilder Creek
 - 11 ha Dry Creek

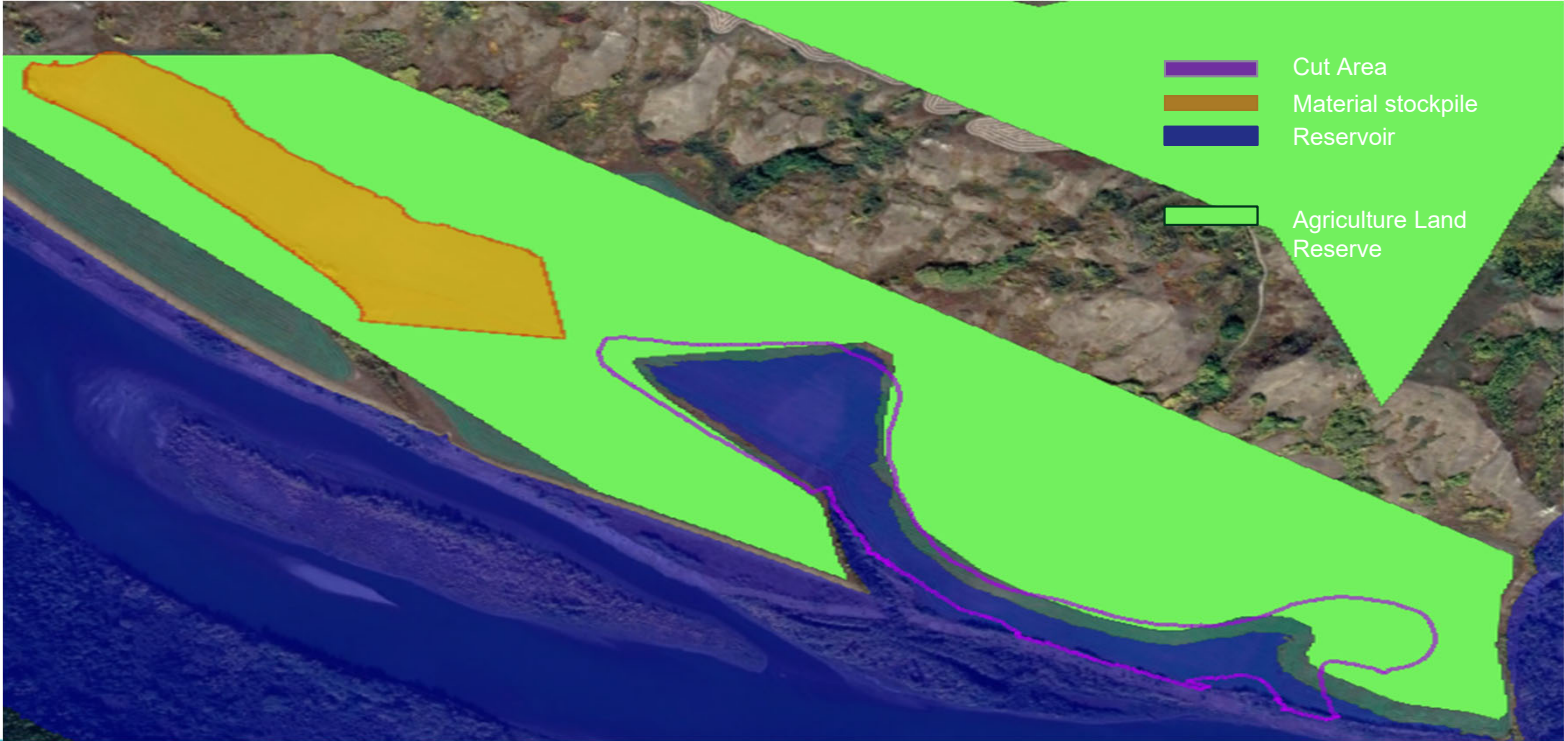


Site C Reservoir Littoral Habitat

Background – How the sites were selected?

- Vigorous selection process that considered:
 - Area within reservoir operating zone at risk for fish stranding
 - Environmental impacts of construction – access requirements, property ownership and clearing requirements
 - Site C reservoir hydrological conditions (e.g., water velocities, rate of sediment deposition)

Wilder Creek - Map



Project Scope

Wilder Creek (22 ha) and Dry Creek (11 ha)

- Cut and fill excavation to develop 33 hectares of habitat between the elevations 456m – 459m
- Majority of the excavation is within the future reservoir footprint. Approximately 7 hectares of Agricultural Land Reserve will be excavated at Wilder Creek
- Excess material at Wilder Creek will be stockpiled on site and capped with topsoil. Area is expected to be available for agricultural use post project
- No excess material expected at Dry Creek. Stripped topsoil to be used in Highway 29 reclamation works

Questions?

BC Hydro
Power smart

Community and Social Mitigation Update

Ben Rauscher

Boater Information

Updates to the Site C boater webpage have been completed with other values to be added:

- Rustic Recreation Site Fund
- Portage program seasonal information
- Boater safety information and advisories for the Peace River
- Status of the current boat launches at Halfway River and Lynx Creek
- Updates on the three new boat launch locations including renderings (where available)
- Bathymetric mapping of the future Site C Reservoir
- Reservoir Opportunities Plan
- Updates to the www.SiteCProject.com/boating website will be shared with local government, indigenous groups, stakeholder groups and the public.

Fund Updates

- **BC Hydro Peace Agricultural Compensation Fund**
 - In 2020, the Board approved approximately **\$400,000** in funding for **17 projects**
 - The Annual General Meeting was held via Zoom on Thursday, Jun 17th, 2021
 - The 2021 intake is currently underway, closing September 30th, 2021, with application review to take place on November 17th, 2021
- **GO Fund**
 - To date, **63 projects** have received **\$552,566**
 - Next application review meeting on December 2nd, 2021
- **Rustic Recreation Site Fund**
 - The 2021 intake is currently underway until October 31st, 2021 with application review to take place immediately upon intake closure

Jobs and Business Opportunities



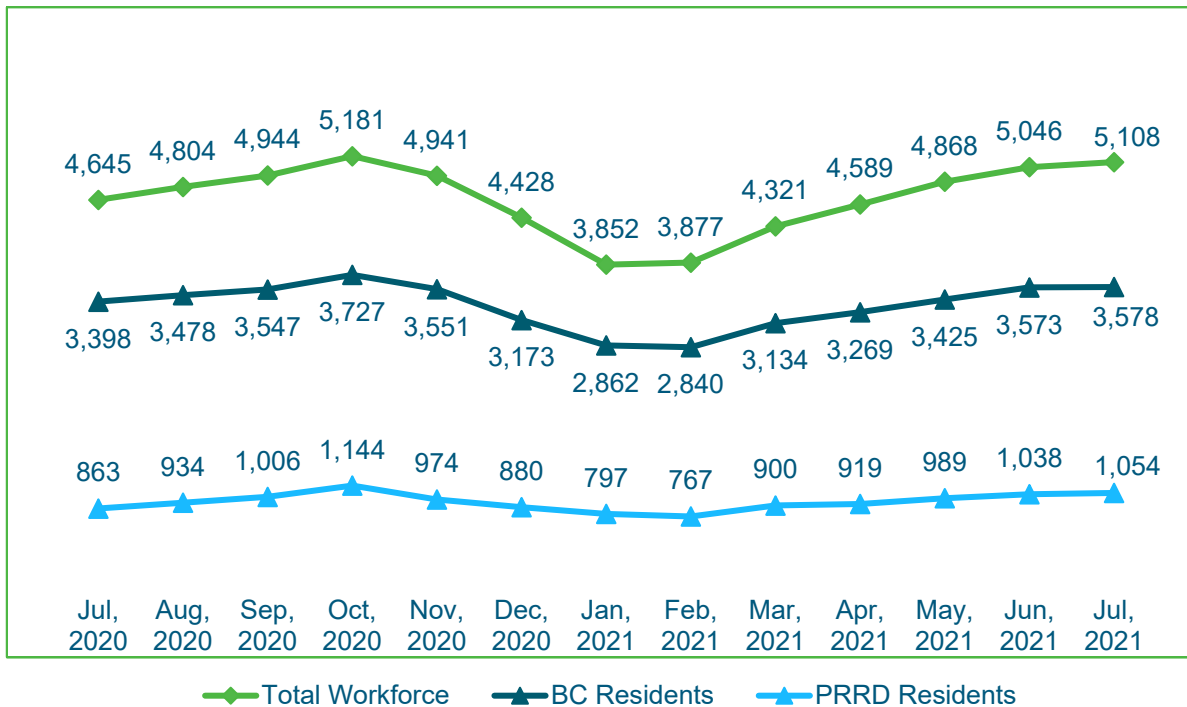
Employment Statistics

Note: The July workforce numbers reflect the Provincial Health Officer order for large scale industrial camps to gradually resume construction activities.

- BC Hydro requires all major contractors to report employment information.
- Total of **5,108** workers in July 2021: **3,578** from BC (70%), **1,054** from PRRD (24%)

Site C Employment Statistics – July 2021			
	# of total workers	# of B.C. primary residents	% of B.C. workers
Construction and non-construction contractors	4,356	2,881	66%
Engineers and project team	752	697	93%
Total workforce	5,108	3,578	70%

Site C Jobs Annual Trends (July 2021)



2021 Q2 Regional Business Participation

Companies engaged by BC Hydro and Site C contractors to provide goods and services in relation to Site C construction between April – June 2021

Community	# of businesses	Community	# of businesses
Baldonnel	1	Moberly Lake	3
Cecil Lake	1	Montney	1
Charlie Lake	15	Pouce Coupe	3
Chetwynd	33	Prince George	31
Dawson Creek	26	Taylor	6
Fort St. John	263	Tumbler Ridge	2
Hudson's Hope	15		
Total			400



BC Hydro

Power smart