

November 19, 2019

Construction update: Highway 29 construction near Lynx Creek

Dear neighbour,

We are writing to let you know about upcoming Site C work taking place near Hudson's Hope. Starting in late November, we will begin work on the Highway 29 realignment at Lynx Creek.

BC Hydro is working with the Ministry of Transportation and Infrastructure on Highway 29 construction. This work is being done to prepare for filling the Site C reservoir, which will widen the Peace River and cover parts of the existing highway. In total, we are building more than 30 km of highway in six different segments of Highway 29.

Construction activities will include:

1. Contractor mobilization: Moving equipment and materials to site. Materials will be stored in a laydown area located between Dry Creek and Farrell Creek.
2. Site preparation: Clearing vegetation and preparing the site for equipment, contractor construction facilities and access roads.
3. Causeway construction on to several islands in the Peace River near Dry Creek.
4. Clearing vegetation from the islands, as part of our reservoir clearing program, and in order to excavate gravel for highway construction. The gravel from these islands will be used for the duration of the Highway 29 project on the Dry Creek and Farrell Creek segments.
5. Building the new highway embankment slightly south of the existing alignment.

What to expect:

- Work may take place up to 24 hours per day, 7 days a week.
- Increased construction-related traffic in the area, including trucks hauling logs, equipment, and highway materials.
- Traffic control personnel and signage.
- Occasional delays to traffic.
- Increased noise, dust and vibration.

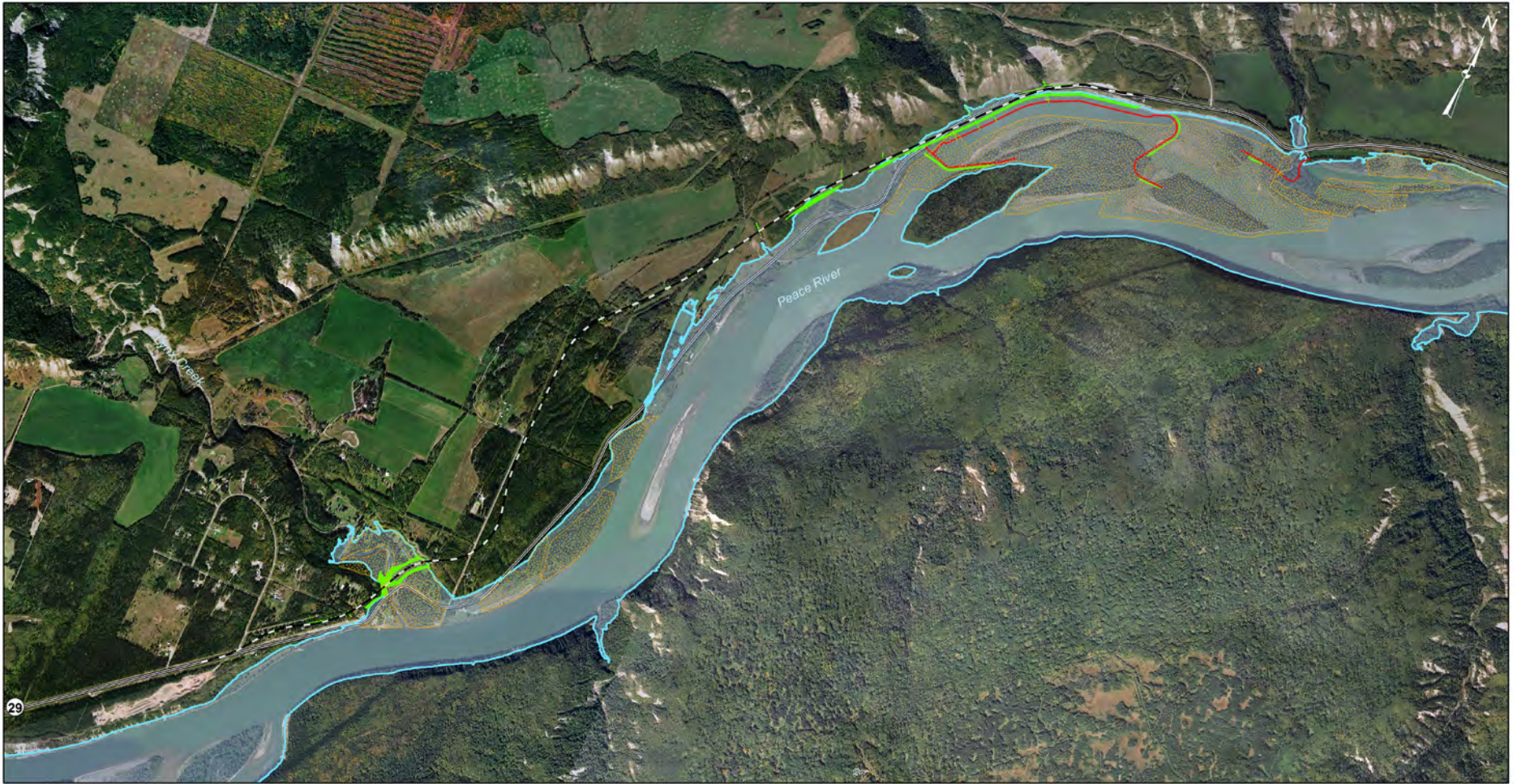
Please drive cautiously through work zones, and obey safety signage and traffic control personnel. We urge you to allow more time for travel.

Thank you for your patience as we complete this work. Please feel free to contact us with any questions or concerns.

Sincerely,

Site C project team

Website: sitecproject.com
Phone: 1-877-217-0777
Email: sitec@bchydro.com
Twitter: [@sitecproject](https://twitter.com/sitecproject)



Map Notes:
 1. Datum: NAD83
 2. Projection: UTM Zone 10N
 3. Base Data: Province of B.C.
 4. Imagery: ESRI Online Basemapping and orthophotos created from 1:40,000 photos taken Sep. 10th 2007.

Index

Legend

- New Highway 29
- Gravel source
- Rock reinforcement (riprap)
- Access Roads
- Existing Highway 29
- Maximum Normal Reservoir Level (461.8 m)

1:26,000 0 0.25 0.5 1 km

Highway 29 construction: Lynx Creek				
Date	Nov. 19, 2019	DWG NO	1016-N11-00695	R 0

Construction of the Site C Clean Energy Project is subject to required regulatory and permitting approvals.

Data: X:\MAG\GIS\Projects\Public_Access\LynxCreek\2016_N11_00695.mxd

© BC Hydro 2019 - all rights reserved. This map is for information purposes only and accuracy is not guaranteed.