

**IN THE MATTER OF THE *ENVIRONMENTAL ASSESSMENT ACT* S.B.C. 2002,  
c.43 (ACT)**

**AND**

**IN THE MATTER OF  
ENVIRONMENTAL ASSESSMENT CERTIFICATE #E14-02  
HELD BY BRITISH COLUMBIA HYDRO AND POWER AUTHORITY**

**FOR THE  
SITE C CLEAN ENERGY PROJECT**

**AMENDMENT #5 (AMENDMENT)  
TO CERTIFICATE #E14-02**

**WHEREAS:**

- A. On October 14, 2014, the Minister of Environment, and the Minister of Energy, Mines, Petroleum Resources, issued Environmental Assessment Certificate #E14-02 (Certificate) to British Columbia Hydro and Power Authority.
- B. The Certificate authorized British Columbia Hydro and Power Authority to construct and operate the Site C Clean Energy Project approximately seven kilometres south-west of Fort St. John, British Columbia.
- C. On June 22, 2018, the Certificate was amended to modify the design of the generating station and spillway (Amendment #1).
- D. On October 26, 2018, the Certificate was amended to modify the design of the Halfway River bridge (Amendment #2).
- E. On July 24, 2018, the Certificate was amended to allow expanded use of material from the West Pine Quarry for construction (Amendment #3).
- F. On February 12, 2019, the Certificate was amended to allow the use of machines near watercourses in clearing the reservoir area (Amendment #4).
- G. On May 31, 2019, British Columbia Hydro and Power Authority applied to amend the Certificate to change a portion of the realignment of the Cache Creek segment of Highway 29 and the design of the Cache Creek bridge (Amendment #5).

**NOW THEREFORE,**

*I amend the Certificate as follows:*

- 1. Segment "Cache Creek" in Table 4.5 in Section 4.3.4.1 of Schedule A (Project Description) is repealed and replaced with:
  - Total Length of Segment (km) "up to 9.0"
  - Causeway Length (m) – "Not applicable"
  - Bridge Length (m) "up to 700"
  - Number of Piers "up to 8"

- Bridge Span “up to 9”
  - Figure Number “4.33 Rev 1 and 4.33 Rev 1 – Detail”
2. “Figure 4.33” in Schedule A is repealed and replaced with “Figure 4.33 Rev 1” and “Figure 4.33 Rev 1 – Detail” (Appendix A of this Amendment).
  3. The Highway 29 realignment for the Cache Creek Segment must be constructed within Corridor 2019 (Amendment #5) and the Holder may utilize Temporary Works (Amendment #5) during alignment construction of the Cache Creek Segment as shown in “Figure 4.33 Rev 1” and “Figure 4.33 Rev 1 – Detail” (Appendix A of this Amendment).

*I also amend the Certificate by adding condition #79 to Schedule B (Table of Conditions) as follows:*

### **Highway 29 Realignment – Cache Creek Segment, Noise Monitoring and Mitigation**

79. The Holder must retain a Qualified Professional to develop a noise monitoring plan to assess potential vehicle traffic noise impacts from the Highway 29 realignment at Cache Creek to the sweat lodge (the receiver location) identified in the application to amend the Certificate. The plan must be developed in consultation with West Moberly First Nations.

The plan must be developed to the satisfaction of the EAO and include at least the following:

- a) Methods to monitor noise levels at the receiver location during all four seasons, with Highway 29 operating in the:
  - i. Current location approximately 235 m away from the sweat lodge (pre-realignment); and
  - ii. Realigned location approximately 370 m from the sweat lodge (post-realignment).
- b) Efforts undertaken to consult with West Moberly First Nations on the draft plan and the opportunities made available to them to participate and provide their views, and how their views have been considered and addressed or why their views have not been addressed.
- c) The Holder must retain a Qualified Professional to develop a report and provide it to the EAO, West Moberly First Nations no later than 90 days after Highway 29 has been operating in its realigned location for one year. The report must include at least the following:
  - i. Monitoring results from a);
  - ii. Identification of noise level thresholds for post-realignment, compared to noise levels at the current highway alignment that, if exceeded, would trigger the need for mitigation;
  - iii. Mitigation measures that the Holder will implement to reduce noise levels to below the thresholds in ii) if monitoring results in a) shows that these thresholds were exceeded; and

- iv. Monitoring plan to assess effectiveness of mitigation measures, if required under this condition.

The Holder must provide the plan to the EAO and West Moberly First Nations no later than 90 days prior to operation of the realigned Cache Creek Segment of Highway #29.

The plan, and any amendments thereto, must be implemented to the satisfaction of a Qualified Professional and to the satisfaction of the EAO.

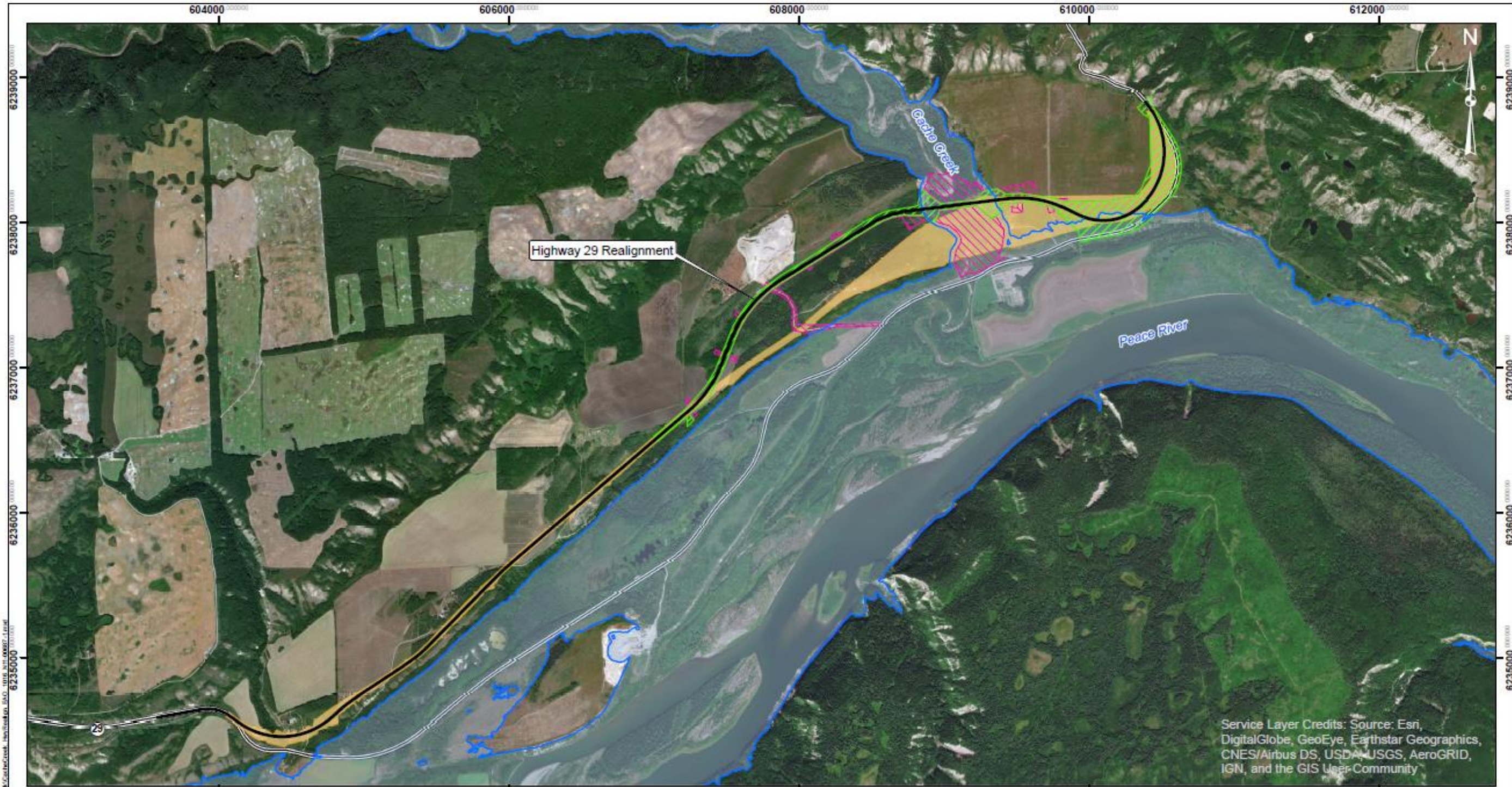


---

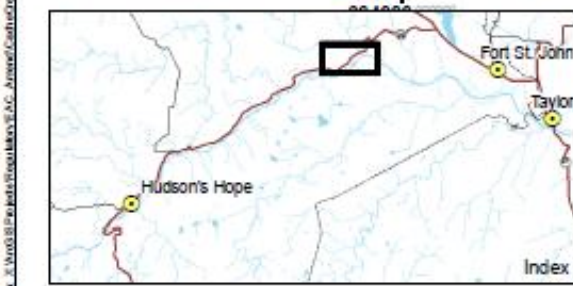
Scott Bailey  
Assistant Deputy Minister  
Environmental Assessment Office

Issued this 13<sup>th</sup> day of December 2019

Appendix A. Figure 4.33 Rev 1 / Highway 29 Realignment – Cache Creek Segment.



Service Layer Credits: Source: Esri, DigitalGlobe, GeoEye, Earthstar Geographics, CNES/Airbus DS, USDA/USGS, AeroGRID, IGN, and the GIS User-Community



Map Notes:  
 1. Datum: NAD83  
 2. Projection: UTM Zone 10N  
 3. Base Data: Province of B.C.  
 4. Imagery: ESRI Online Basemapping

- Legend**
- Highway 29 Realignment
  - Corridor 2019 (Amendment #5)
  - Temporary Works 2019 (Amendment #5)
  - Corridor 2014 (Certificate)
  - Maximum Normal Reservoir Level (461.8 m)
  - Existing Highway 29

1:25,000 0 612000 1 km

**Figure 4.33 Rev 1**  
**Highway 29 Realignment - Cache Creek Segment**

Date Dec 17, 2019 R 1

Appendix A. Figure 4.33 Rev 1 – Detail / Highway 29 Realignment – Cache Creek Segment

