

IN THE MATTER OF THE *ENVIRONMENTAL ASSESSMENT ACT*
S.B.C. 2018, c. 51 (the Act)

AND

IN THE MATTER OF ENVIRONMENTAL ASSESSMENT CERTIFICATE # E-14-02
HELD BY BRITISH COLUMBIA HYDRO AND POWER AUTHORITY

FOR THE
SITE C CLEAN ENERGY PROJECT

AMENDMENT #9 (AMENDMENT)
TO CERTIFICATE # E14-02

WHEREAS:

- A. On October 14, 2014, the Minister of Environment and the Minister of Forests, Lands and Natural Resource Operations issued Environmental Assessment Certificate # E14-02 (Certificate) to British Columbia Hydro and Power Authority (BC Hydro).
- B. The Certificate authorized BC Hydro to construct and operate the Site C Clean Energy Project approximately seven kilometres south-west of Fort St. John, British Columbia.
- C. Six amendments have been issued under Section 19(1) of the *Environmental Assessment Act*, S.B.C. 2002, c.43:
 - i. On June 22, 2018, the Certificate was amended to modify the design of the generating station and spillway (Amendment # 1).
 - ii. On October 26, 2018, the Certificate was amended to modify the design of the Halfway River bridge (Amendment # 2).
 - iii. On November 14, 2018, the Certificate was amended to allow expanded use of material from the West Pine Quarry for construction (Amendment # 3).
 - iv. On February 12, 2019, the Certificate was amended to allow the use of machines near watercourses in clearing the reservoir area (Amendment # 4).
 - v. On December 13, 2019, the Certificate was amended to change a portion of the realignment of the Cache Creek segment of Highway 29 and the design of the Cache Creek bridge (Amendment # 5).
 - vi. On December 13, 2019, the Certificate was amended to make changes to the worker accommodation camps (Amendment # 6).
- D. Two amendments have been issued under Section 32(1) of the Act:
 - vii. On May 27, 2020, the Certificate was amended to modify the design of the Highway 29 realignment crossings of Farrell Creek, Dry Creek, and Lynx Creek (Amendment # 7).
 - viii. On November 24, 2020, the Certificate was amended to develop and use the Halfway River East Borrow Source (Amendment #8).
- E. On June 14, 2021, BC Hydro requested an amendment under Section 32(1) of the Act to change the location of a boat launch and day use area in Certificate Condition #40 from Cache Creek to a location east of the Halfway River.

- F. Pursuant to Section 4 of the Act, the Chief Executive Assessment Officer has delegated to the undersigned, powers and duties under the Act, including the power to consider requests for certificate amendments.

NOW THEREFORE,

I amend the Certificate as follows:

1. The third bullet of Condition #40 of Schedule B of the Certificate which reads:

- Establish three new boat launch/day use sites, complete with parking, picnic areas and toilets, at Cache Creek, Lynx Creek, and Hudson's Hope Shoreline, and accessible via Highway 29.

Is repealed and replaced with:

- Establish three new boat launch/day use sites, complete with parking, picnic areas and toilets, at Halfway River (as shown in Figures 1 and 2), Lynx Creek, and Hudson's Hope Shoreline, and accessible via Highway 29.

2. Add the following definition to Schedule B of the Certificate:

Conservation Officer	A Conservation Officer employed by the BC Conservation Officer Service.
----------------------	---

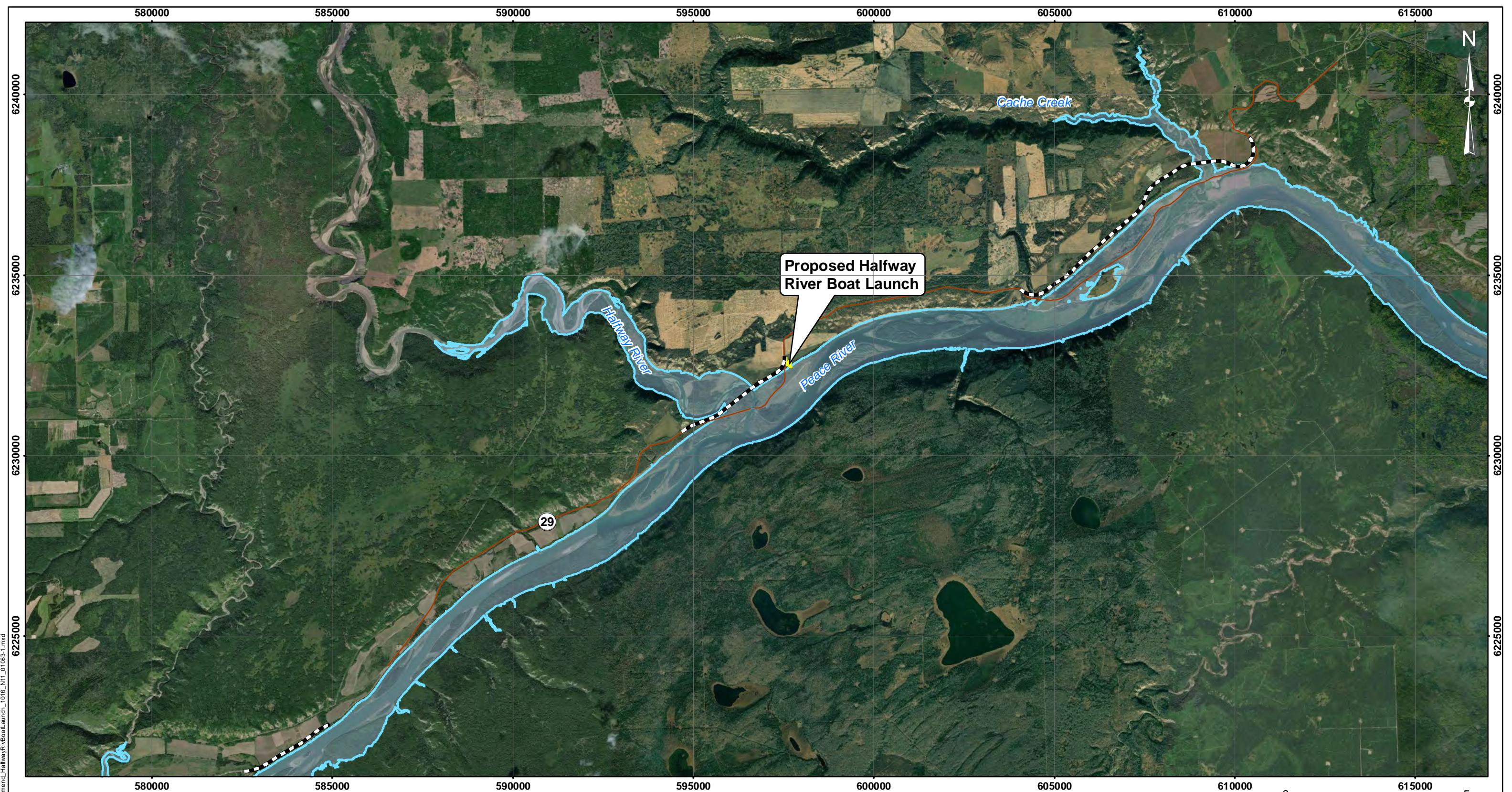
3. Condition #80 is added to Schedule B of the Certificate as follows:

80. The Holder must fund a Conservation Officer position for 5 years.



Michael Shepard
A/Deputy Chief Executive Assessment Officer
Environmental Assessment Office

Issued this 6th day of May, 2022



Proposed Halfway River Boat Launch

29

Cache Creek

Halfway River

Peace River

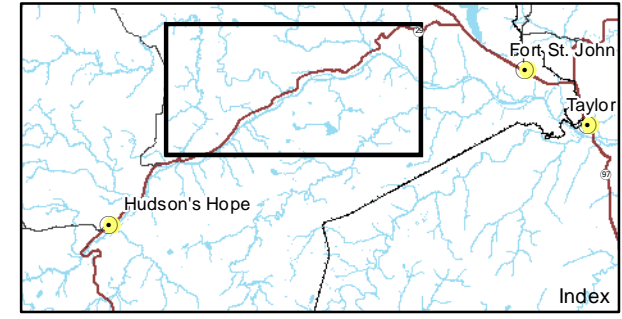
Legend

- Halfway River Boat Launch (Proposed Location)
- Maximum Normal Reservoir Level (461.8 m)
- Highway 29 Realignments
- Existing Highway

1:100,000 0 5 km

**Figure 1: Overview
Proposed Location of Halfway River Boat Launch**

Map Notes:
 1. Datum: NAD83
 2. Projection: UTM Zone 10N
 3. Base Data: Province of B.C.
 4. Imagery: ESRI Online Basemapping.
 5. Reservoir area (461.8m maximum normal elevation) from Digital Elevation Models (DEM) generated from LIDAR data acquired July/August, 2006.

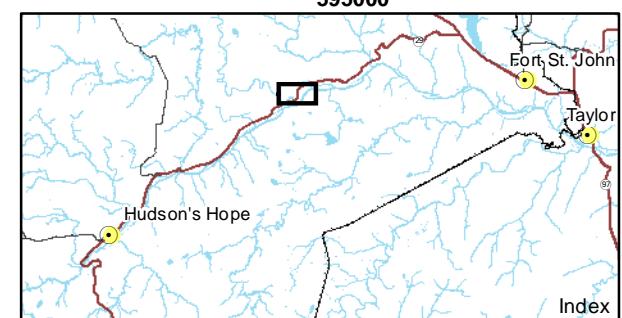


Path: X:\GIS\Projects\Regulatory\EAC_Amend_HalfwayRiverBoatLaunch_1016_N11_01083-1.mxd

Date	Mar 22, 2021	DWG NO	1016-N11-01083-1	R 0
------	--------------	--------	------------------	-----



Path: X:\GIS\Projects\Regulatory\EAC_Amend\HalfwayR\BoatLaunch_1016_N11_01083-2.mxd



Map Notes:
 1. Datum: NAD83
 2. Projection: UTM Zone 10N
 3. Base Data: Province of B.C.
 4. Imagery: ESRI Online Basemapping.
 5. Reservoir area (461.8m maximum normal elevation) from Digital Elevation Models (DEM) generated from LIDAR data acquired July/August, 2006.

© BC Hydro 2021 - all rights reserved.

Legend

- Halfway River Boat Launch (Proposed Location)
- Maximum Normal Reservoir Level (461.8 m)
- - - Highway 29 Realignment - Halfway River
- Existing Highway

1:15,000 0 600000 0.75
 km

Figure 2: Detail
Proposed Location of Halfway River Boat Launch

Date	Mar 5, 2021	DWG NO	1016-N11-01083-2	R 0
------	-------------	--------	------------------	-----