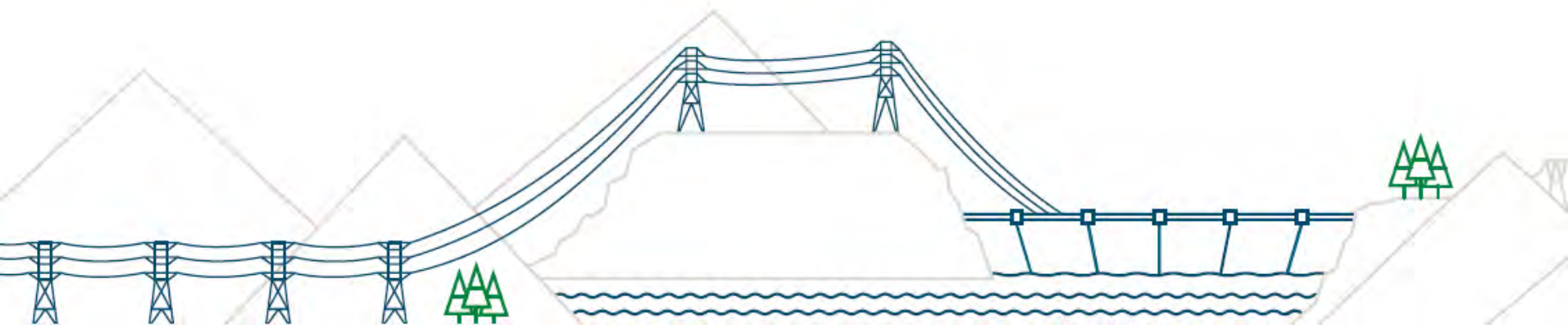


Site C Clean Energy Project

Regional Community Liaison Committee Project Briefing

December 7, 2016



Construction update



Construction Progress: 1 Year



2.5 million

cubic metres of material excavated and relocated



900 hectares

of land cleared for site preparation



1,600 rooms

available in worker accommodation lodge



65,000+ cubic metres

of timber delivered to local mills in Fort St. John



329-metre

construction bridge



11.1 kilometres

of public road improvements

Current/upcoming construction activities

Dam site area

- Continuation of earthworks on north and south banks, including excavation on the south bank and north bank slope stabilization.
- Construction of the south bank drainage tunnel, which will require tunnelling.
- Construction of the south bank cofferdam and north bank cofferdam.
- Construction of the inlet cofferdam on the north bank.
- Riprap placement along the cofferdams.
- Construction of the south bank approach channel.

Current/upcoming construction activities

Dam site area

- Excavation for the powerhouse buttress.
- Material crushing for the roller-compacted concrete (RCC) buttress. Crushed material will be used to produce concrete at the batch plants on the south bank.
- Continued construction of the Moberly River construction bridge and causeway.
- Voith Hydro, the turbines and generators contractor, is expected to access their laydown and work area on the south bank of the dam site in early March. This includes the mobilization of crews and equipment and the beginning of excavation and foundation preparation for their on-site manufacturing facility.

Current/upcoming construction activities

Other work areas

- Construction of north bank viewpoint and access road reached substantial completion in fall 2016. Paving, landscaping and installation of display signs will occur in spring 2017.
- Upgrade work for 271 Road and Old Fort Road will continue in spring 2017; completion expected in late spring 2017.
- Initial survey work and geotechnical investigations may occur in Hudson's Hope to support detailed design development for the shoreline protection project.
- Survey work will occur to support the design of the Halfway River debris boom, to be constructed and installed in fall 2017.

Current/upcoming construction activities

Other work areas

- The reservoir clearing contractor will mobilize to the dam site and begin clearing in some areas of the lower and eastern reservoir. This clearing is required now to prepare the area for the work that will facilitate river diversion in 2019. Planned work areas include:
 - Clearing the eastern and lower reservoir on the north and south banks of the Peace River from the dam site to Cache Creek, including Tea Island.
 - Clearing in the Moberly River valley.



**New work areas:
Winter 2016 / Spring 2017**

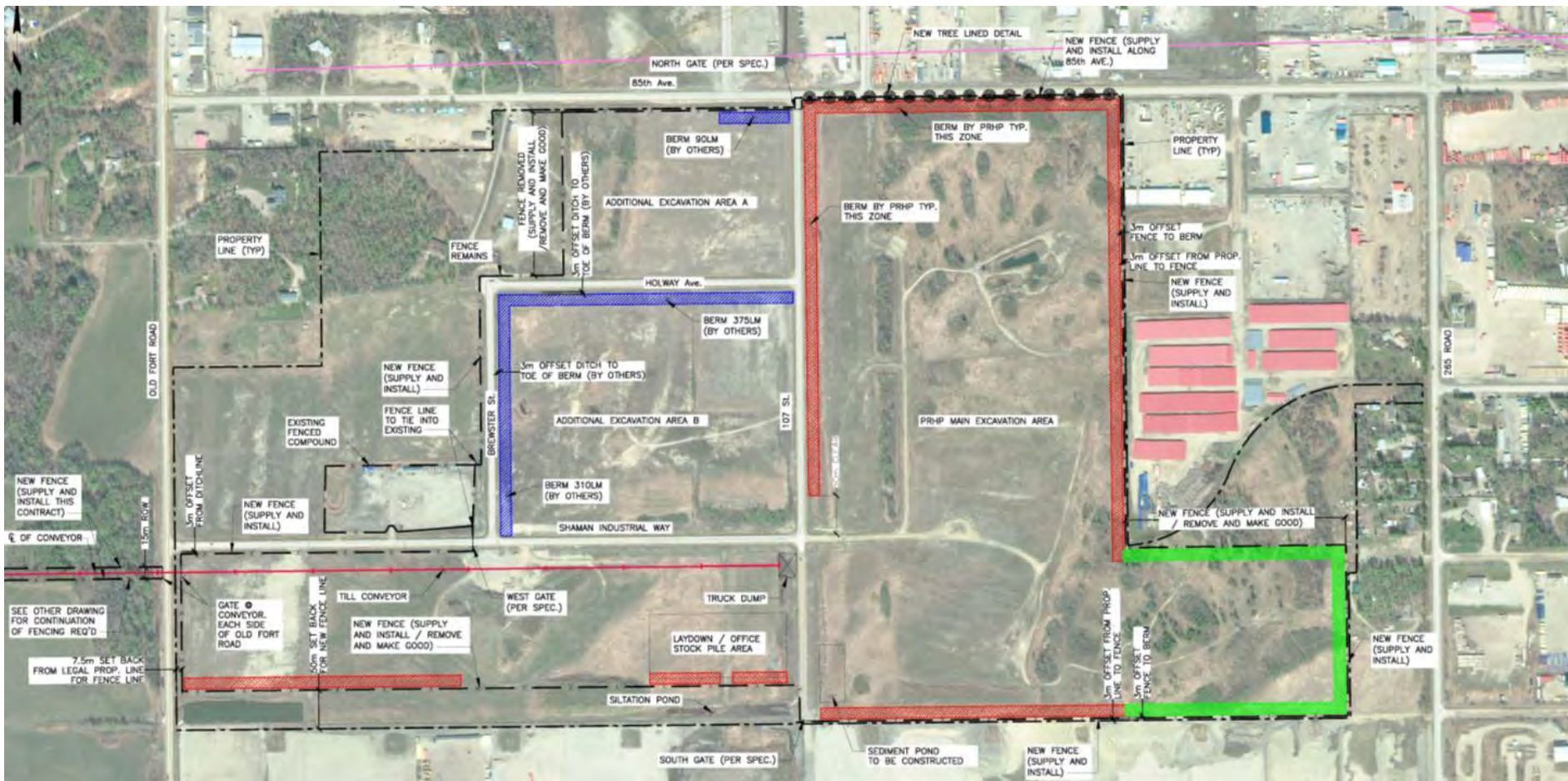
Transmission lines

Current / upcoming construction activities

- Upgrading of existing access roads connecting to the transmission right-of-way: **In Progress**
- Clearing and road construction along the transmission right-of-way between the Site C dam site and Jackfish Lake Road: **Dec 2016 – Mar 2017**
- Geotechnical investigations along the transmission line right-of-way: **Jan – Feb 2017**



85th Avenue Industrial Lands



Highway 29

Cache Creek:

- Geotechnical and heritage work is complete at Cache Creek/Bear Flat.
- The area for the new Highway 29 alignment and the aggregate sources for Cache Creek/Bear Flat will be cleared and grubbed from January – March 2017.

Other areas:

- Survey work, geotechnical investigations and heritage monitoring will occur as required to support detailed design development at Halfway River.
- Investigative work may occur along Highway 29 for distribution line relocations required as a result of the planned Highway 29 realignments.

Downstream aquatic habitat



South bank batch plants



South bank access roads & cofferdam



Moberly River construction bridge (October 2016)




Old Fort Road realignment (October 2016)



Site C worker accommodation lodge lobby



A line of yellow Caterpillar bulldozers is parked on a dirt field. The bulldozers are arranged in a row, receding into the distance. The background shows a clear blue sky and a dirt embankment. The text "Procurement update" is overlaid on the right side of the image in white, bold font.

Procurement update

Procurement update

Procurement approach designed to achieve value for money to ratepayers



Procurements underway:

- Generating Station and Spillways Civil Works – *RFP phase*
- Hydro-mechanical Equipment Supply – *RFQ evaluation phase*

Future procurements:

- Transmission Line – Construction
- Transmission Line – Supply contracts
- Site C Substation – Construction
- Site C Substation – Supply contracts
- Other infrastructure / supporting activities

Jobs and Businesses Update



Site C jobs snapshot

Site C Employment Statistics – September 2016

	# of Total Workers	# of PRRD Workers
Construction and Non-Construction Contractors ¹ <i>Excludes work performed outside of B.C. (e.g. manufacturing)</i>	1,345	PRHP: 326 ATCO: 123 Other: 151 Total: 600
Engineers and Project Team ² <i>(engineering, consulting and project staff)</i>	406	
Total Workforce ³	1,750	

1. Includes work performed on Site C dam site, transmission corridor, reservoir clearing area, public roadwork, worker accommodation and services.
2. Project Team includes consultants, BC Hydro Construction Management and other offsite Site C project staff. An estimate is provided where possible if primary residency is not given.

2016 Q3 Regional Business Participation

Companies engaged as sub-contractors to BC Hydro's contractors

Community	Number of Businesses
Cecil Lake	1
Charlie Lake	7
Chetwynd	6
Dawson Creek	3
Fort St. John	135
Pouce Coupe	1
Prince George*	2
Taylor	2
Tumbler Ridge	1
Wonowon	1
Total	159

PRRD businesses provide a range of services

- Equipment rentals and sales
- Vehicle rentals
- Office supplies
- Accommodation and hospitality
- Safety and first aid services
- General contracting
- Trucking



BC Hydro

Power smart